



**URBAN**  
GROUP

# Punta Cana City Place

With the support of major brands like Mercedes Benz, Hilton, Marriott, and Ikea among others, City Place is already positioning itself as the fastest-growing project in Punta Cana.

Its private beach access, inclusion of schools and hospitals, plus the best amenities in the area, represent a unique growth opportunity.

With over 5,000,000m<sup>2</sup> and just 7 minutes from Punta Cana airport, City Place offers an unmatched return on investment.



Macao Beach

Bavaro Beach

Downtown



PROJECT

Airport  
7 Minutes



Hilton

SAIKO Business Center

Social Business Center

Montesori School

City Place  
Entrance

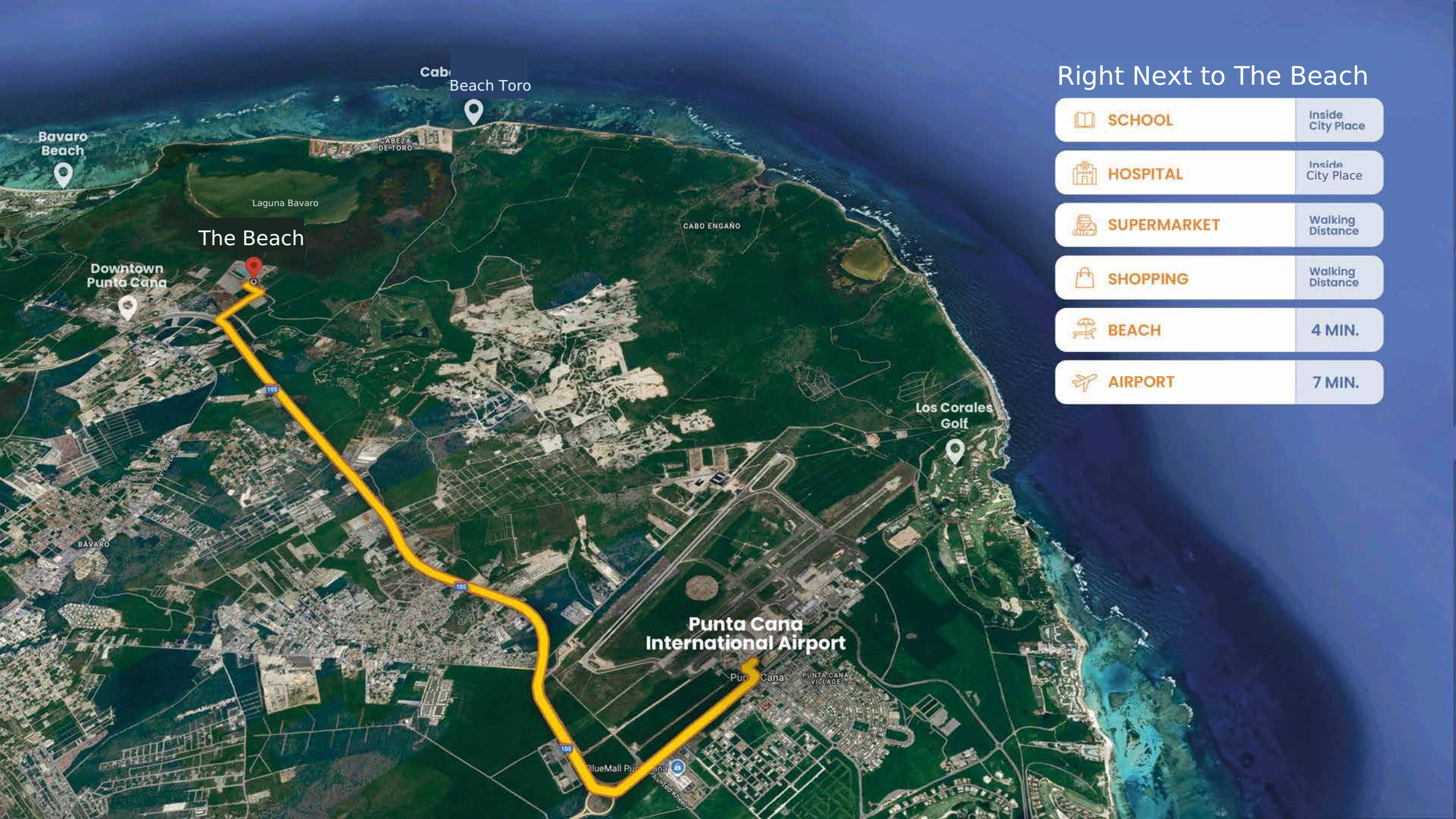
The Point Shopping Mall

Marriott




Hospiten

Cabeza de Toro Beach  
4 Minutes





## Right Next to The Beach

-  **SCHOOL** Inside City Place
-  **HOSPITAL** Inside City Place
-  **SUPERMARKET** Walking Distance
-  **SHOPPING** Walking Distance
-  **BEACH** 4 MIN.
-  **AIRPORT** 7 MIN.



SPORTS BAR + COURTS  
TENNIS PADEL PICKLEBALL

SOLE PH 20

MARE TYPE B 19

SOLE PH 18

SOLE 17

MARE TYPE B 16

SOLE PH 15

MARE TYPE B 14

SOLE 13

MARE TYPE B 12

SOLE 11

SOLE PH 10

SOLE 9

SOLE 8

SOLE 7

MARE TYPE B 21

SOLE 22

MARE TYPE B 23

MARE TYPE B 24

MARE TYPE B 25

SOLE 26

VOLLEYBALL COURT

SNACK BAR

RESTAURANTS & INFINITY POOL

PALMERA  
ROOFTOP BAR

GATED ACCESS

SOLE PH 1

MARE TYPE A 2

SOLE PH 3

MARE TYPE A 4

SOLE PH 5

MARE TYPE A 6

SOLE PH 7

MARE TYPE A 8

MARE TYPE A 9

MARE TYPE A 10

MARE TYPE A 11

MARE TYPE A 12

MARE TYPE A 13

1 TYPE 1

4 TYPE 1

5

8 TYPE 2

2 TYPE 1

3 TYPE 1

6 TYPE 2

7 TYPE 2

9 TYPE 1

12 TYPE 1

13 TYPE 2

16 TYPE 2

10 TYPE 1

11 TYPE 1

14 TYPE 2

15 TYPE 2

17

18

19

20

21

22

POOL HOUSE

POOL HOUSE

ARENA

MINIMARKET  
DRY-CLEANING GYM

KIDS PLAYGROUND

SNACK BAR

MINIMARKET DRY-CLEANING GYM

CONDO-HOTEL  
SHOPS & RESTAURANTS

POOL AREA

POOL AREA

POOL HOUSE

POOL HOUSE





*Crystal Lagoons*<sup>®</sup>



# Arena GROUND FLOOR

## APARTMENTS A £.G

151 m<sup>2</sup> (125 + 26)

1625 sq. ft.

- \* 3 bedrooms
- \* 2.5 bathrooms
- \* Terrace

## APARTMENTS B/C/E/F

126 m<sup>2</sup> (100 + 26)

1356 sq. ft.

- \* 2 bedrooms
- \* 2 bathrooms
- \* Terrace

## JACUZZI ADD-ON

\* \$12,000 USD



9

(0 0 > M 0 0

A

# Arena 2ND TO STH FLOOR

## APARTMENTS A £G

125 m<sup>2</sup>

1345 sq. ft.

- \* 3 bedrooms
- \* 2.5 bathrooms
- \* Balcony

## APARTMENTS B/C/E/F

100 m<sup>2</sup>

1076 sq. ft.

- \* 2 bedrooms
- \* 2 bathrooms
- \* Balcony

## APARTMENT D

70 m<sup>2</sup>

753 sq. ft.

- 1 bedroom
- \* 2 bathrooms



9

F

E

D

C

B

a



# T2

## Arena

TYPE 2  
GROUND FLOOR

### APARTMENTS A & I

110 m<sup>2</sup> (85 + 25)

184 sq. ft.

- \* 2 bedrooms
- \* 2 bathrooms
- \* Terrace

### APARTMENTS B/C/G/H

84 m<sup>2</sup> (65 + 19) 904 sq. ft.

- \* 1 bedroom
- \* 1 bathroom
- \* Terrace

### APARTMENTS D & F

57 m<sup>2</sup>\* (45 + 12)

613 sq. ft.

- \* Studio Apartment
- \* Terrace

### JACUZZI ADD-ON

\* \$12,000 USD





# Arena 2ND TO STH FLOOR

## APARTMENTS A €

- 85 m<sup>2</sup>
- 915 sq. ft.
- \* 2 bedrooms
- \* 2 bathrooms
- \* Balcony

## APARTMENTS B/C/G/H

- 65 m<sup>2</sup>
- 700 sq. ft.
- \* 1 bedroom
- \* 1 bathroom
- \* Balcony

## APARTMENTS D/E/F

- 45 m<sup>2</sup>
- 484 sq. ft.
- \* Studio Apartment
- \* Balcony



006 ELEVATOR

ELEVATOR





# Arena

BUILDINGS 17518 GROUND FLOOR

## APARTMENTS A/B/F/G

84 m\* (65 +19)

904

1 bedroom

1 bathroom

\* Terrace

## APARTMENTS C KE

57 m<sup>2</sup> (45 +12)

613 sq. ft.

\* Studio Apartment

\* Terrace

## JACUZZI ADD-ON

\* \$12,000 USD



Arena BUILDINGS  
17518 2ND TO 5TH  
FLOOR

APARTMENTS A/B/F/G

65 m<sup>2</sup>

700 sq. ft.

1 bedroom

1 bathroom

\* Terrace

APARTMENTS C /D/E

45 m<sup>2</sup>

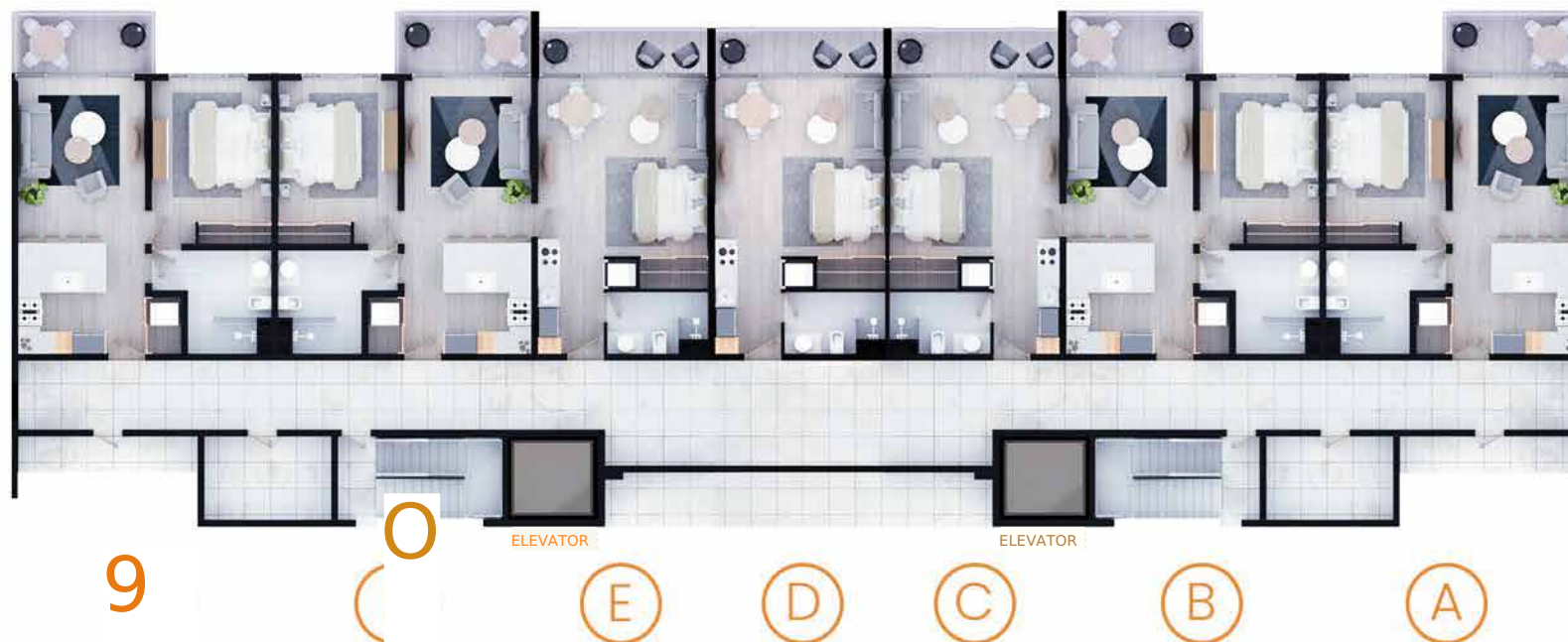
484 sq. ft.

\* Studio Apartment

\* Terrace

JACUZZI ADD-ON

\* \$12,000 USD





Your apartment includes household appliances:



Stove



A/C



Fridge



Washer &  
Dryer



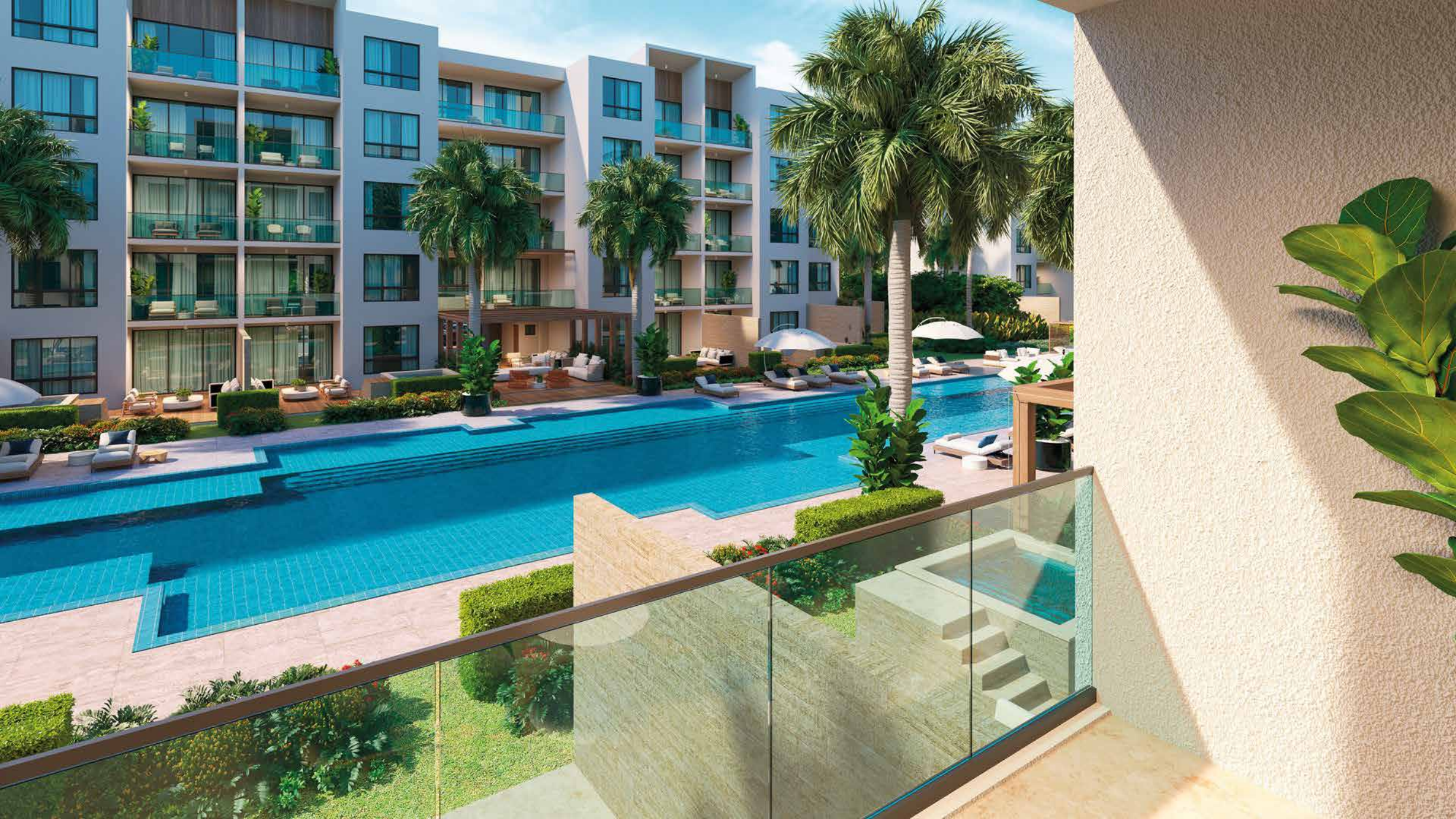
Kitchen  
Hood



Water  
Heater

The Beach gives you access to recreational areas, gardens, pools, and the stunning Crystal Lagoon.

Secure your spot today for as little as US\$ 3000.





KIDS PLAYGROUND

MINIMARKET  
DRY-CLEANING | GYM

SNACK BAR

Sole 20

SPORTS BAR + COURTS  
TENNIS | PADEL | PICKEBALL

Arena 18

Arena 10

VOLLEYBALL COURT

Mare 21

PALMERA  
ROOFTOP BAR

SNACK BAR

Sole 22

Arena 11

Mare 23

KIDS POOL

Arena 9

Mare 24

Mare 25

Sole 26

Arena 17

Arena 14

Arena 12

GATED ACCESS

Arena 2

Arena 15

Arena 16

KIDS POOL

Arena 13

Arena 3

KIDS POOL

Arena 1

Arena 16

Arena 6

Arena 4

ARENA  
POOL HOUSE

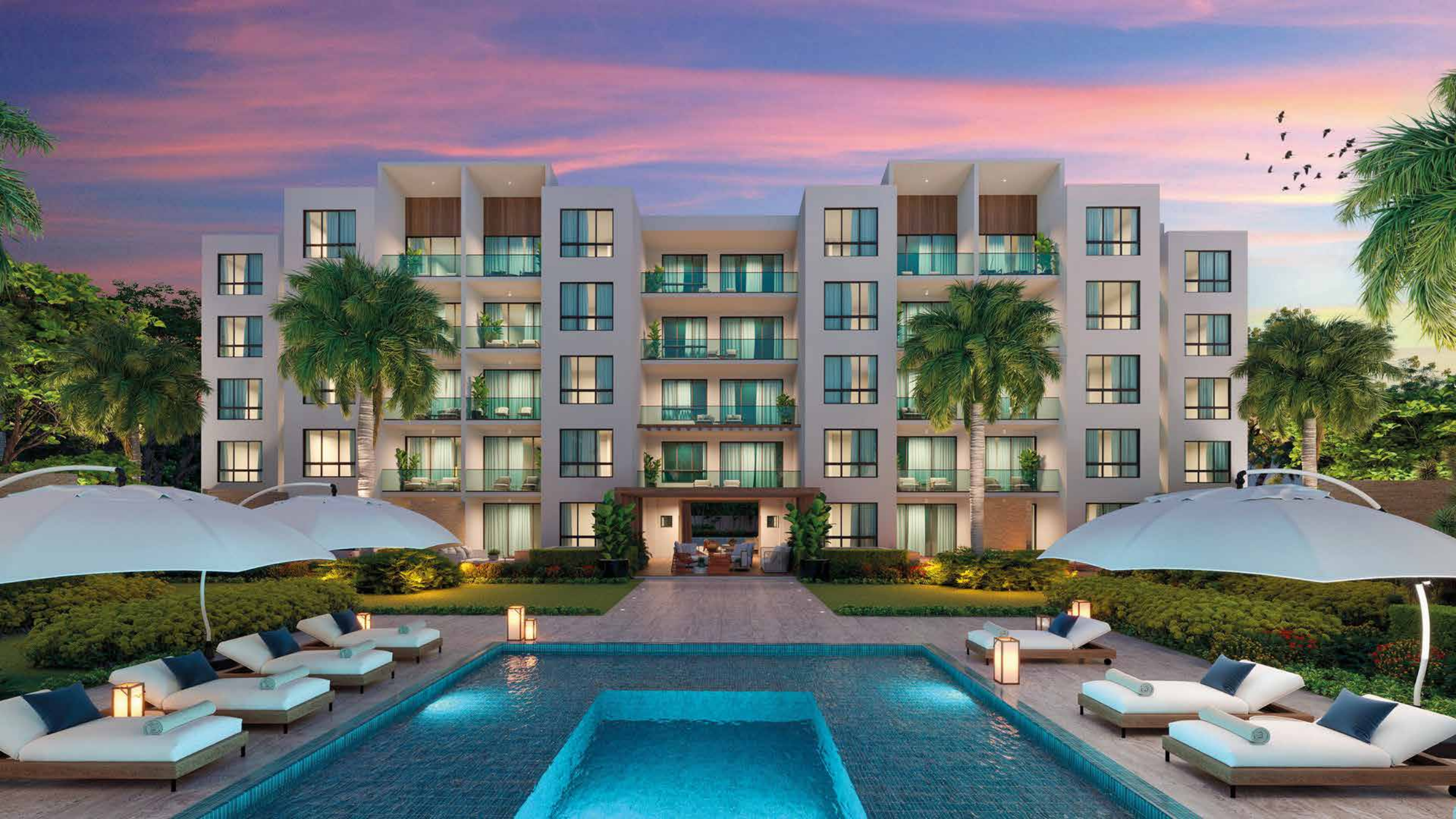
Arena 7

KIDS POOL

Arena 5

Arena 8

POOL HOUSE





## PAYMENT PLAN

RESERVE WITH  
US\$ 3,000

20%  
RESERVE

30%  
DURING CONSTRUCTION

50%  
UPON DELIVERY

"PENALTIES APPLY"

- NON-REFUNDABLE RESERVATION.

- TRANSFER COSTS ARE THE CLIENT'S RESPONSIBILITY, THE RECEIPT WILL  
BE ISSUED FOR THE AMOUNT REFLECTED IN THE DEVELOPER'S ACCOUNTS.





## PUNTA CANA

Boulevard November 1st, Punta Cana  
Professional Center, Local 316, Punta Cana  
Village

Tel: 829-420-5203 IG:  
[urbangroup.do](http://urbangroup.do)  
[info@urbangroup.do](mailto:info@urbangroup.do)  
[www.urbangroup.do](http://www.urbangroup.do)

## SANTO DOMINGO

C/Rafael A. Sánchez No. 46 Ana  
Judith Building, Local 203-A  
Ens. Naco

Tel: 809-566-3672 IG:  
[urbangroup.do](http://urbangroup.do)  
[Info@urbangroup.do](mailto:Info@urbangroup.do)  
[www.urbangroup.do](http://www.urbangroup.do)

## SANTIAGO

Plaza Zona Rosa, Av. Juan Pablo  
Duarte Local No. C-1-7-A

Tel: 829-961-2986 IG:  
[urbangroup.do](http://urbangroup.do)  
[Info@urbangroup.do](mailto:Info@urbangroup.do)  
[www.urbangroup.do](http://www.urbangroup.do)