

BLEND — A P A R T M E N T S & B E A C H



A NEW CONCEPT WHERE ARCHITECTURE AND  
DESIGN BLEND WITH NATURE.

YOUR PLACE IN THE HEART OF THE CARIBBEAN



MEET THE PARADISE

# Bayahíbe Perfect destination.

Bayahíbe is the perfect destination for those looking to relax on idyllic beaches and enjoy a picturesque fishing village with Caribbean charm. Bathed by the Caribbean Sea and blessed with white sand and crystal-clear waters, it offers a tropical climate that guarantees pleasant temperatures year-round.

Our Bayahíbe complex is versatile and adapts to all audiences. With Flex Dual-Key units, Studio, 1 and 2-bedroom options and their exclusive amenities, here you will find the ideal setting to enjoy the beach, relaxation, gastronomy and fun.



BLEND — APARTMENTS & BEACH





Blend  
BAYATIME APARTMENTS & BEACH







# Location





NEW!

PROJECT

[View on Google Maps](#)

18°22'08.0"N 68°50' 05.0"W

600 m

from Bayahibe pier with transfers to Isla Saona, Isla Catalina and Playa Palmilla

650 m

from the beach.

6 km

from Playa Dominicanus.

15 min

to La Romana International Airport (LRM).

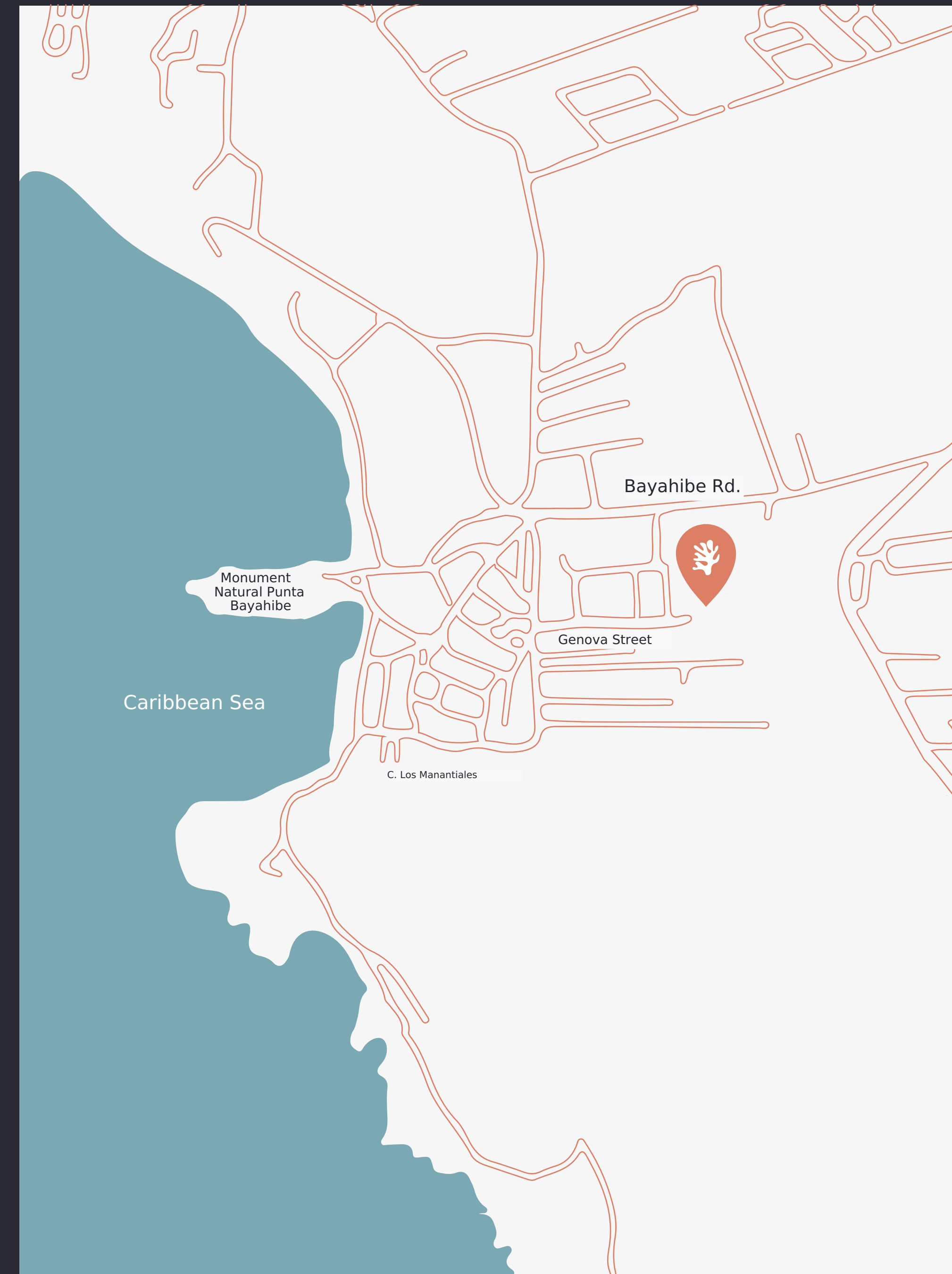
45 min

to Punta Cana International Airport (PUJ).

80 min

to Las Américas International Airport. Santo Domingo (SDQ).

Nearby places of interest: Catalina Island | Saona Island | Casa de Campo Resort & Villas | Altos de Chavón | Santo Domingo | Punta Cana





# Services and amenities



SERVICES & AMENITIES

24-hour security

Monitored entry control

Elevators

Electronic locks

Pools and artificial beach

Private parking

Co-working space

Pickleball court

Padel court

Gym

Entertainment area

Bar

Restaurant

Mini-market

Lobby

Charging station  
for electric cars



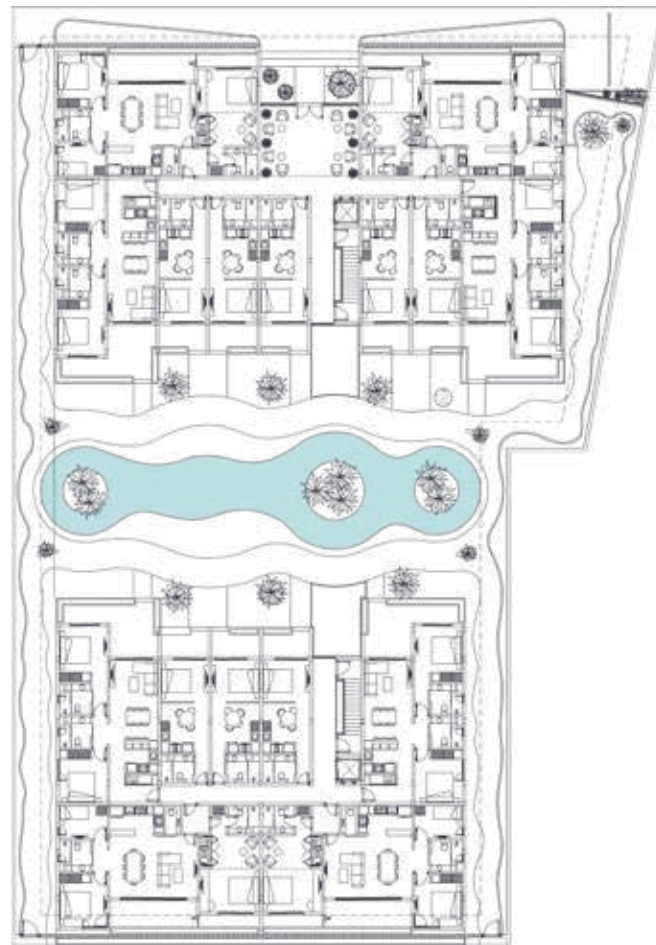




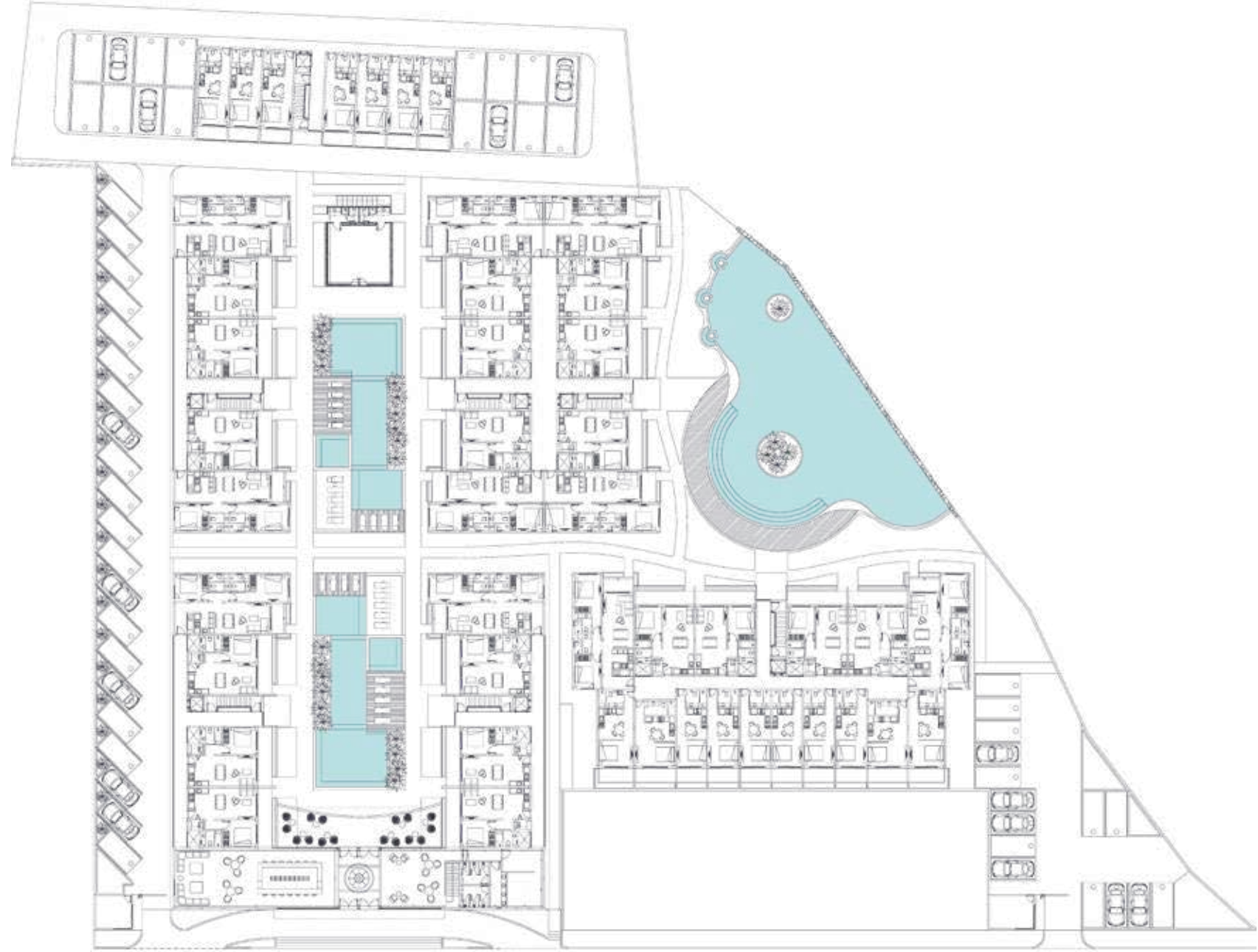
# Masterplan



GENOVA STREET



ENTRY



GENOVA STREET

TYOLOGIES

- Flex Dual-Key
- Studio
- 1 bedroom
- 2 bedrooms

CLICK TO

[SEE MORE DETAILS](#)

# Typologies



ENJOY CARIBBEAN LIFESTYLE

Our Studio Units, Flex Dual - Key,  
1 and 2 bedrooms, invite you to explore the perfect  
balance between comfort and beauty.



TYPYLOGY

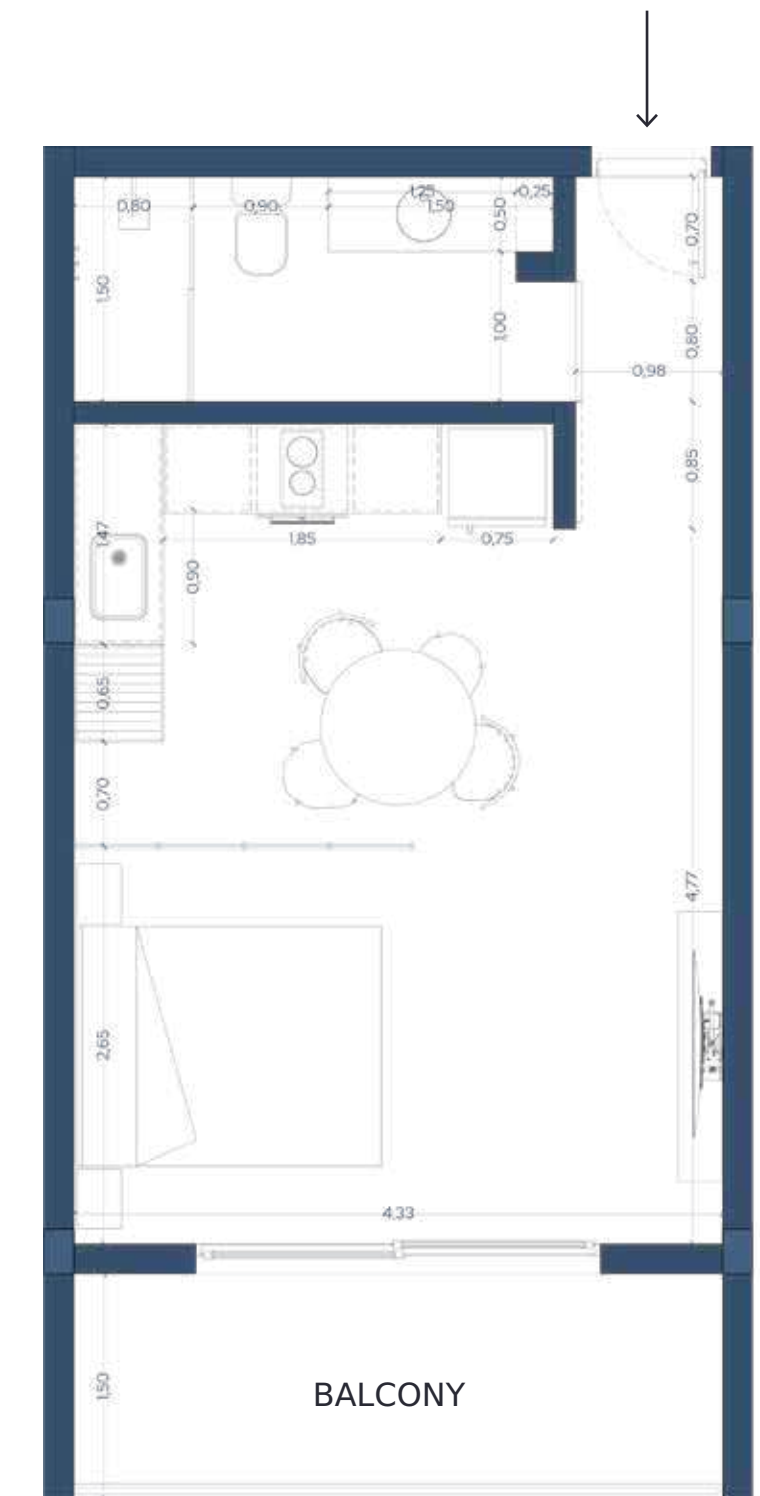
# — STUDIO

Kitchen | Living-dining | Bathroom | Balcony

Six typologies with measurements that cover:

From 37.50 m<sup>2</sup> to 47 m<sup>2</sup> of total area. From 32 m<sup>2</sup> to 36.36 m<sup>2</sup> of covered area. From 5.50 m<sup>2</sup> to 10.65 m<sup>2</sup> of balcony area.

Typology E reference plan



CLICK TO

[SEE MORE DETAILS](#)





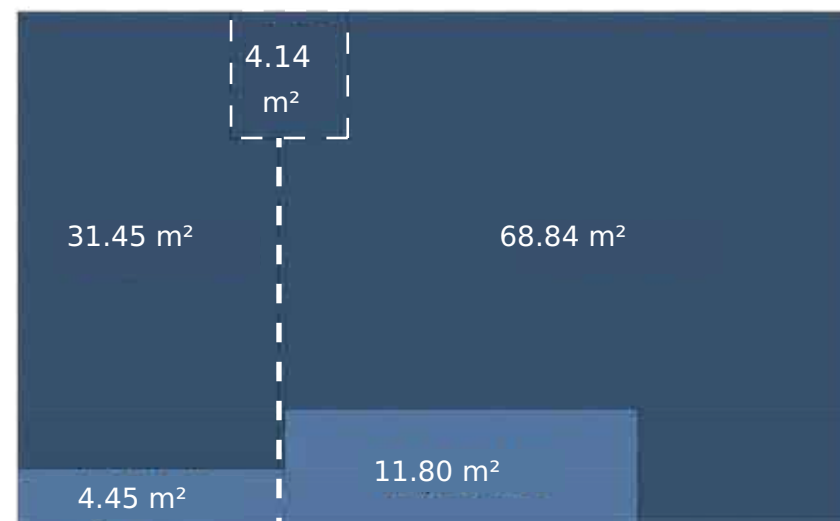
T YPOLOGÍA

# FLEX DUAL-KEY

Hall | 2 kitchens | 3 bedrooms | Living-dining | 2.5 bathrooms | Balcony

Smart and versatile investment. Perfect for those looking to maximize space, this typology allows operating as two independent units, increasing income opportunities.

Total area	120.68 m <sup>2</sup>
Covered area	104.43 m <sup>2</sup>
Balcony area	16.25 m <sup>2</sup>



CLICK TO  
[SEE MORE DETAILS](#)





T TYPOLOGY

# — 1 ROOM

Kitchen | Living-dining room | Bathroom | Bedroom | Balcony

Two typologies with measurements that cover:

From 64.02 m<sup>2</sup> to 72.97 m<sup>2</sup> of total area.

From 50.38 m<sup>2</sup> to 58.79 m<sup>2</sup> of covered area.

From 13.65 m<sup>2</sup> to 14.18 m<sup>2</sup> of balcony area.

Referential plan typology C



CLICK TO

[SEE MORE DETAILS](#)





T TYPOLOGY

## 2 ROOMS

Kitchen | Living-dining | Full bathroom | Master bedroom Suite | Balcony

Six typologies with measurements that cover:

From 87.15 m<sup>2</sup> to 113.59 m<sup>2</sup> total area.

From 80.07 m<sup>2</sup> to 88.87 m<sup>2</sup> of covered area.

From 7.04 m<sup>2</sup> to 33.48 m<sup>2</sup> balcony area.

Referential plan typology H



CLICK TO

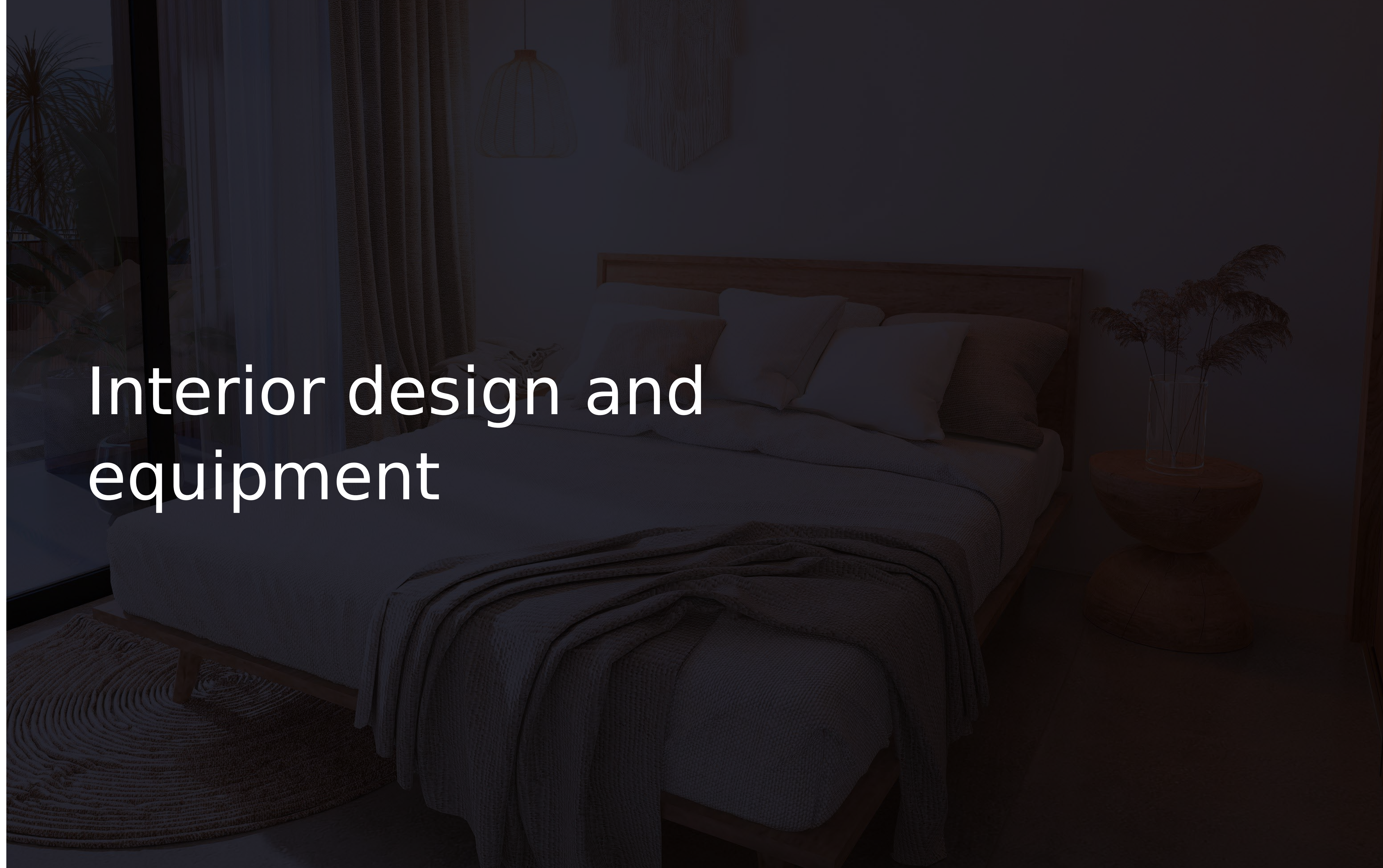
[SEE MORE DETAILS](#)







# Interior design and equipment



# Modern Chic— Interior Design

Discover apartments where every corner reflects design and quality, equipped with a white goods line, offering an ideal balance between comfort and aesthetics.

## VANGUARD DESIGN

Spaces with clean and elegant lines, combined with cutting-edge details.

## HIGH-QUALITY MATERIALS

Use of durable materials that add elegance.

## COLOR HARMONY

Neutral and soft tones are combined with bold and vibrant accents.

## COMFORT AND FUNCTIONALITY

Each area is designed not only to be aesthetic but also comfortable and functional, offering a relaxed and hassle-free lifestyle.







## PAYMENT PLAN

RESERVE WITH  
US\$ 3,000

20%  
CONTRACT SIGNING

40%  
DURING CONSTRUCTION

40%  
UPON DELIVERY

### DELIVERIES

May 2026 - Phase 1

July 2026 - Phase 2

March 2027 - Phase 3

"PENALTIES APPLY"

- NON-REFUNDABLE RESERVATION.

- TRANSFER COSTS ARE THE CLIENT'S RESPONSIBILITY. THE RECEIPT WILL  
BE ISSUED FOR THE AMOUNT REFLECTED IN THE DEVELOPER'S ACCOUNTS.





## PUNTA CANA

Vista Cana Business Center,  
Local 22,  
Vista Cana

Tel: 829-420-5203 IG:  
urbangroup.do  
info@urbangroup.do  
www.urbangroup.do

## SANTO DOMINGO

C/Rafael A. Sánchez No. 46 Edf. Ana  
Judith, Local 203-A  
Ens. Naco

Tel: 809-566-3672 IG:  
urbangroup.do  
Info@urbangroup.do  
www.urbangroup.do

## SANTIAGO

Plaza Zona Rosa, Av. Juan  
Pablo Duarte Local No.  
C-1-7-A

Tel: 829-961-2986 IG:  
urbangroup.do  
Info@urbangroup.do  
www.urbangroup.do