

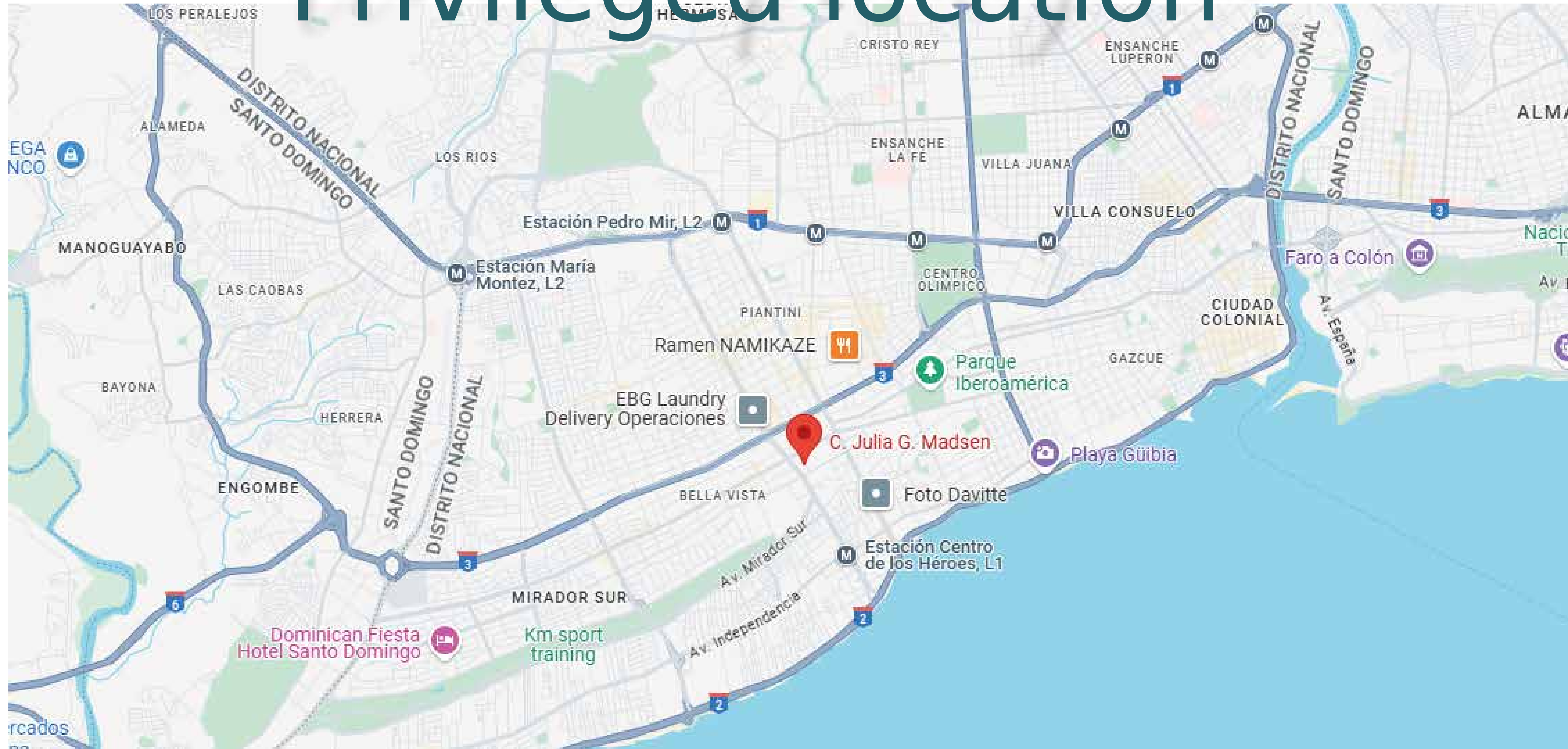


URBAN
GROUP

A modern high-rise building is shown against a clear blue sky at dusk. The building features a prominent facade with a white, geometric lattice pattern on the left side. The balconies are illuminated with warm, golden lights, creating a rhythmic pattern of light and shadow. The building's architecture is contemporary, with clean lines and a mix of materials. The overall scene is serene and highlights the building's design and lighting.

Santo Domingo, La Julia

Privileged location





LIAM
SUITES



LIVIN
SUITES



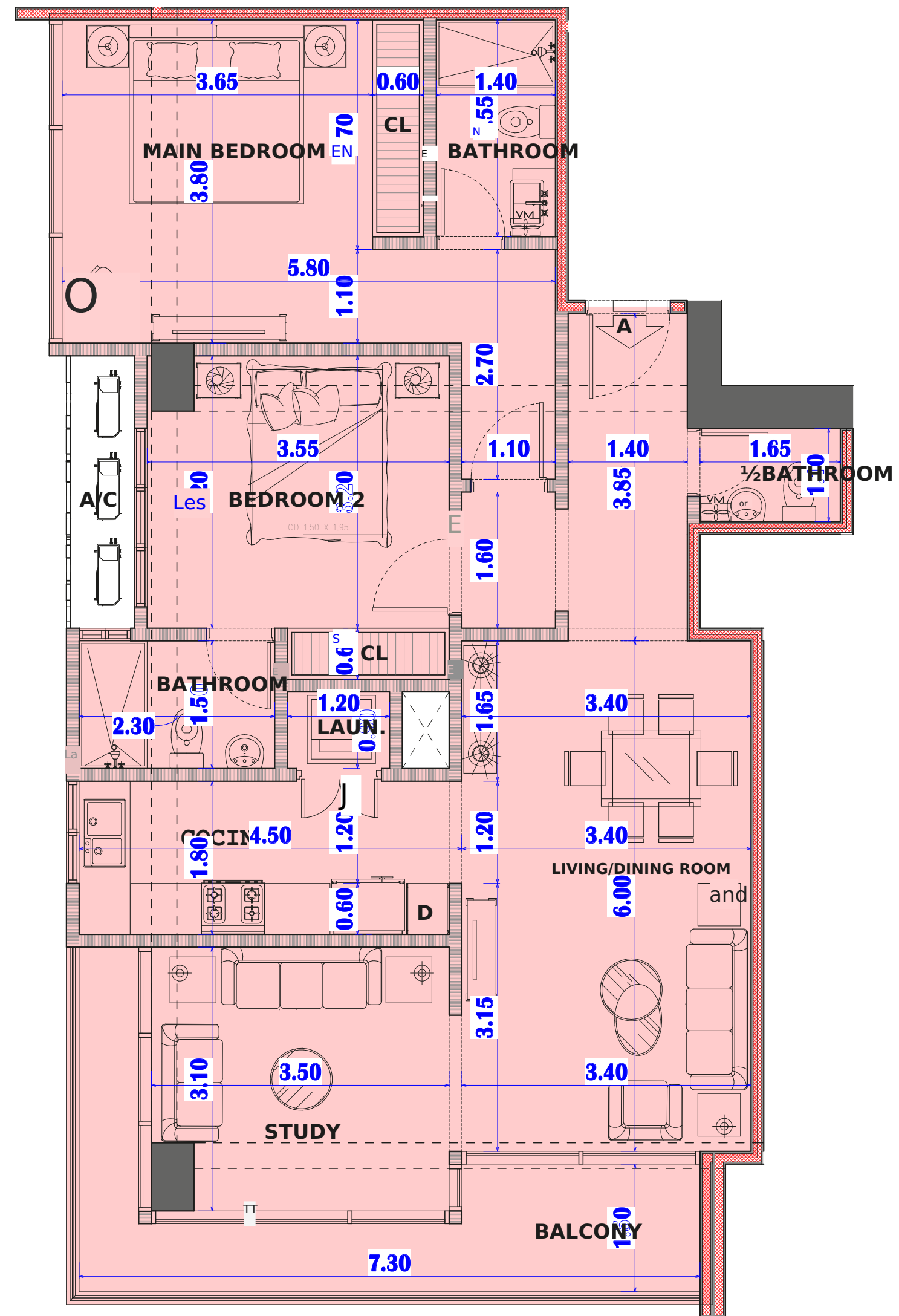
LIAM
SUITES



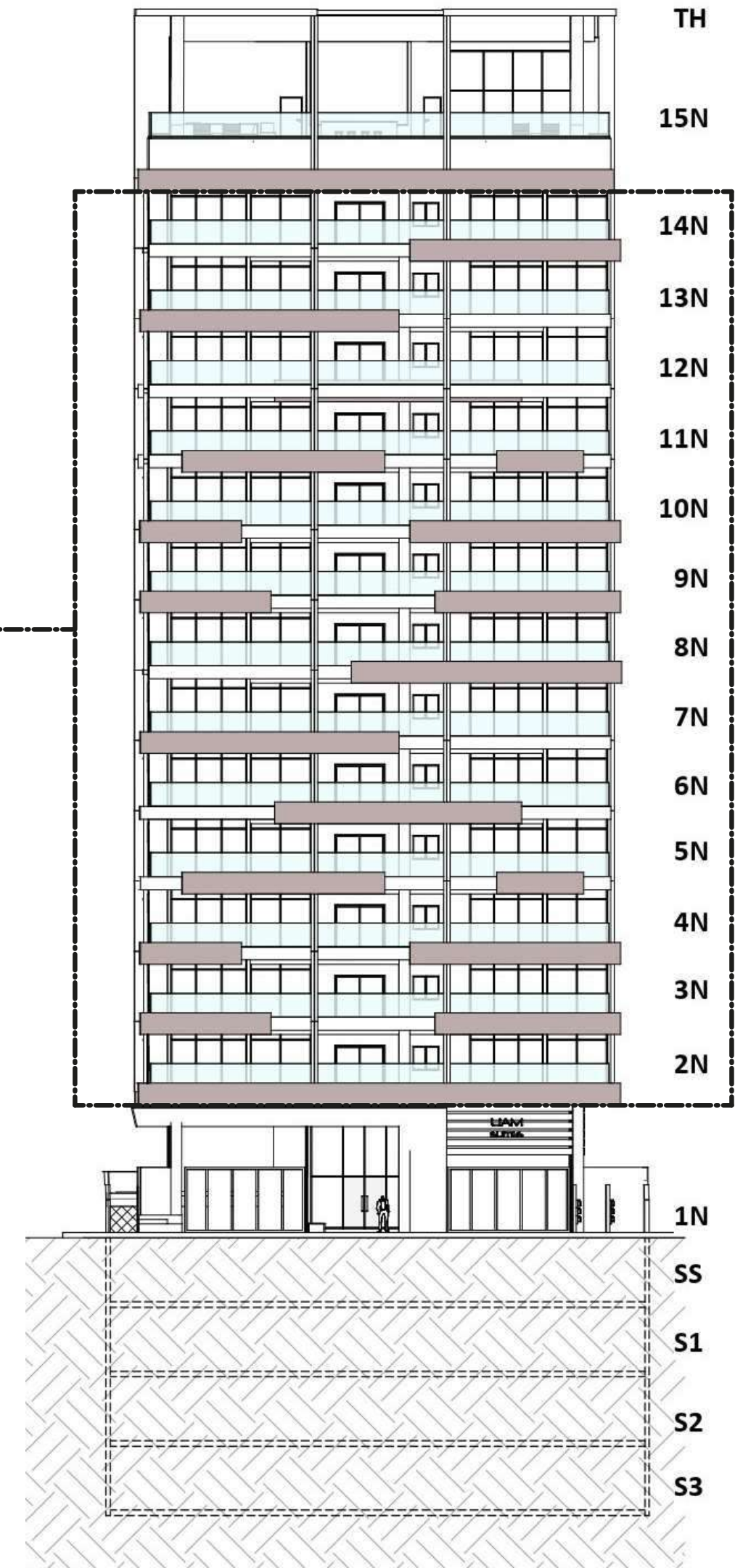






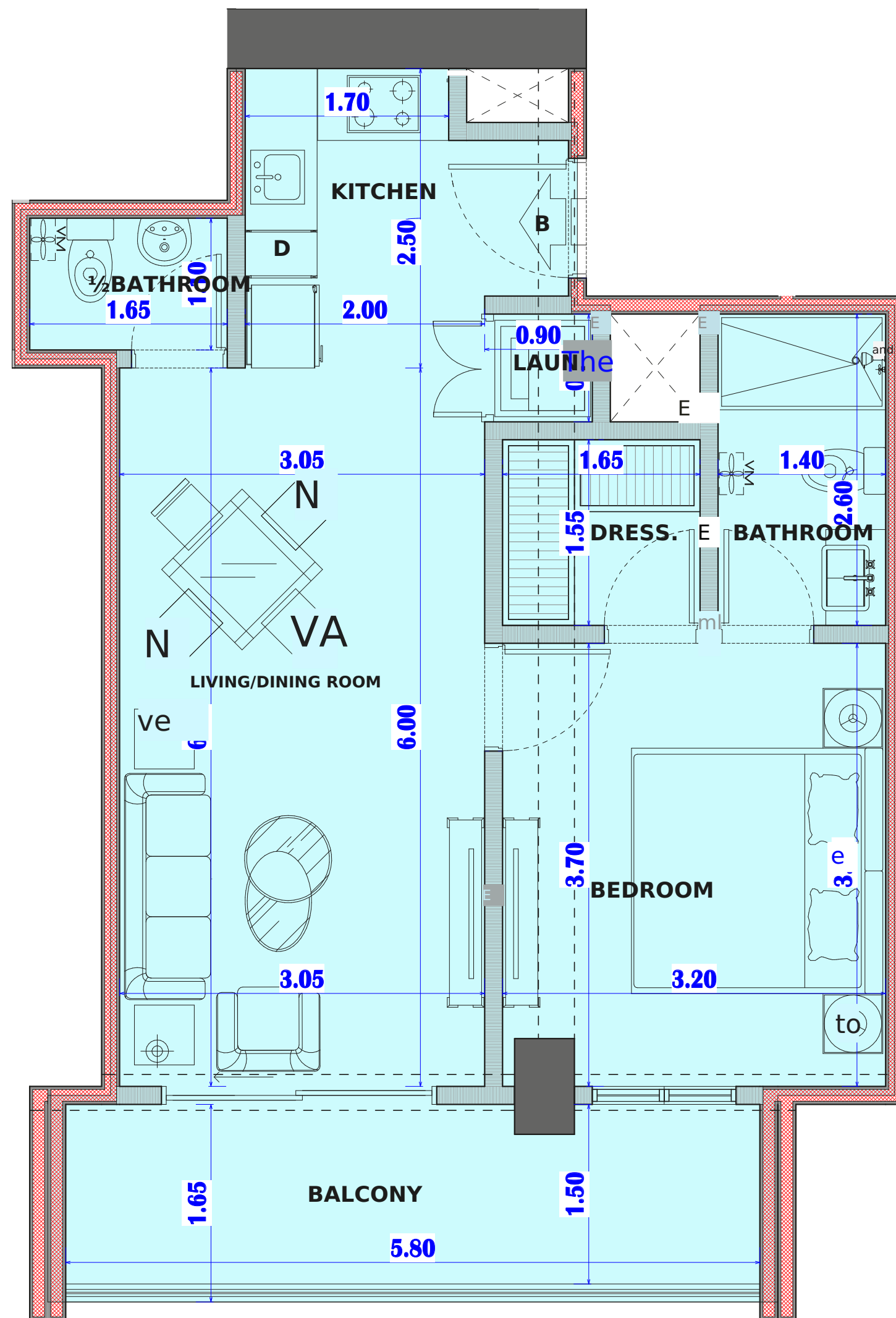


APT A
110.00 Mt²

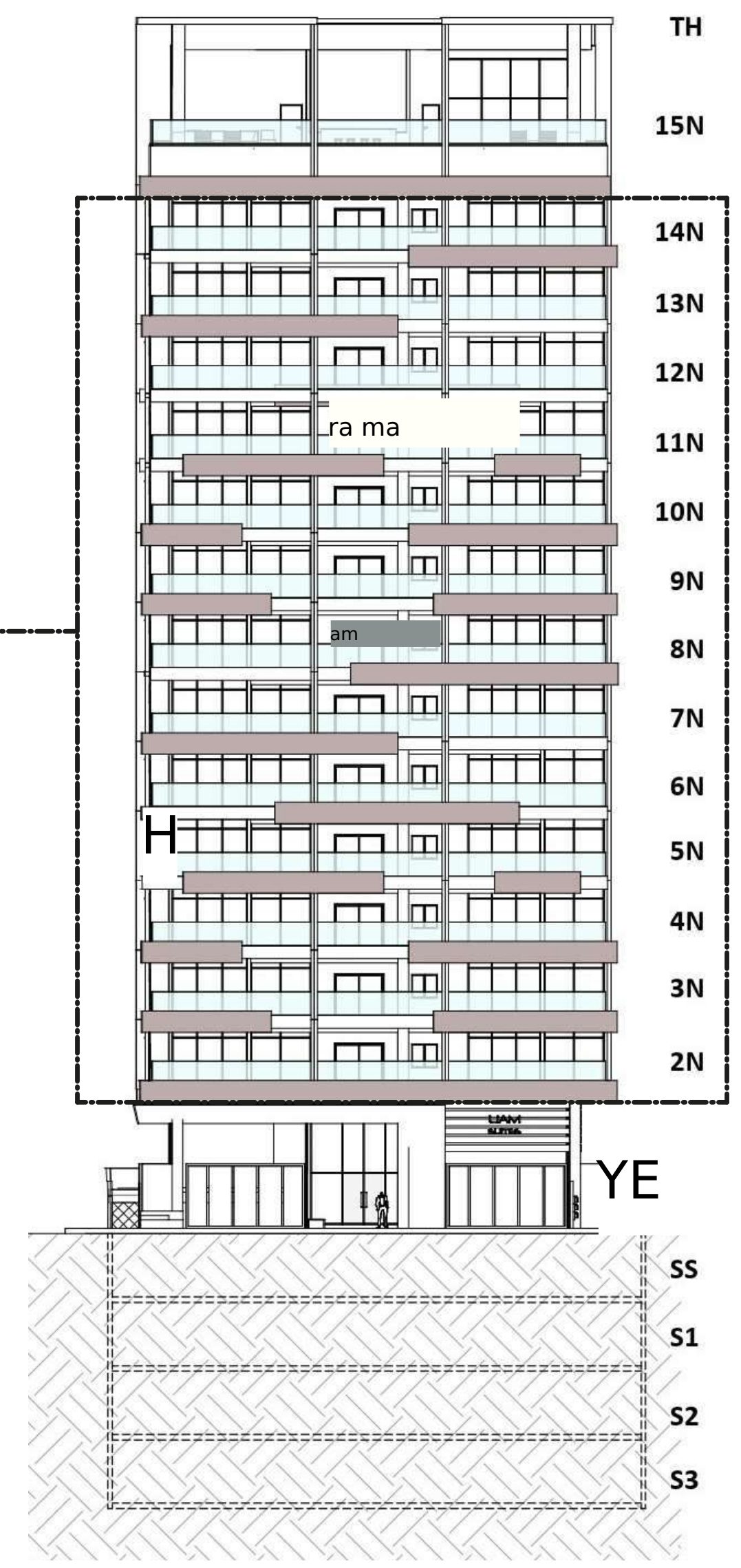


IMPORTANT: 1. All Issued Dimensions are from wall to wall, not to their axes, and their finishes may result in slight tolerance to the final measurements, which are expressed in meters. 2. The supplied Area is the result of the shaded boundary with its corresponding color and does not include air conditioning pockets, full walls, or partition walls between apartments. 3. Structural Elements are indicated with Dark Shading (Wall/Columns) and Beam Projections with a Dotted Line.

APTO A - 110.00 Mre

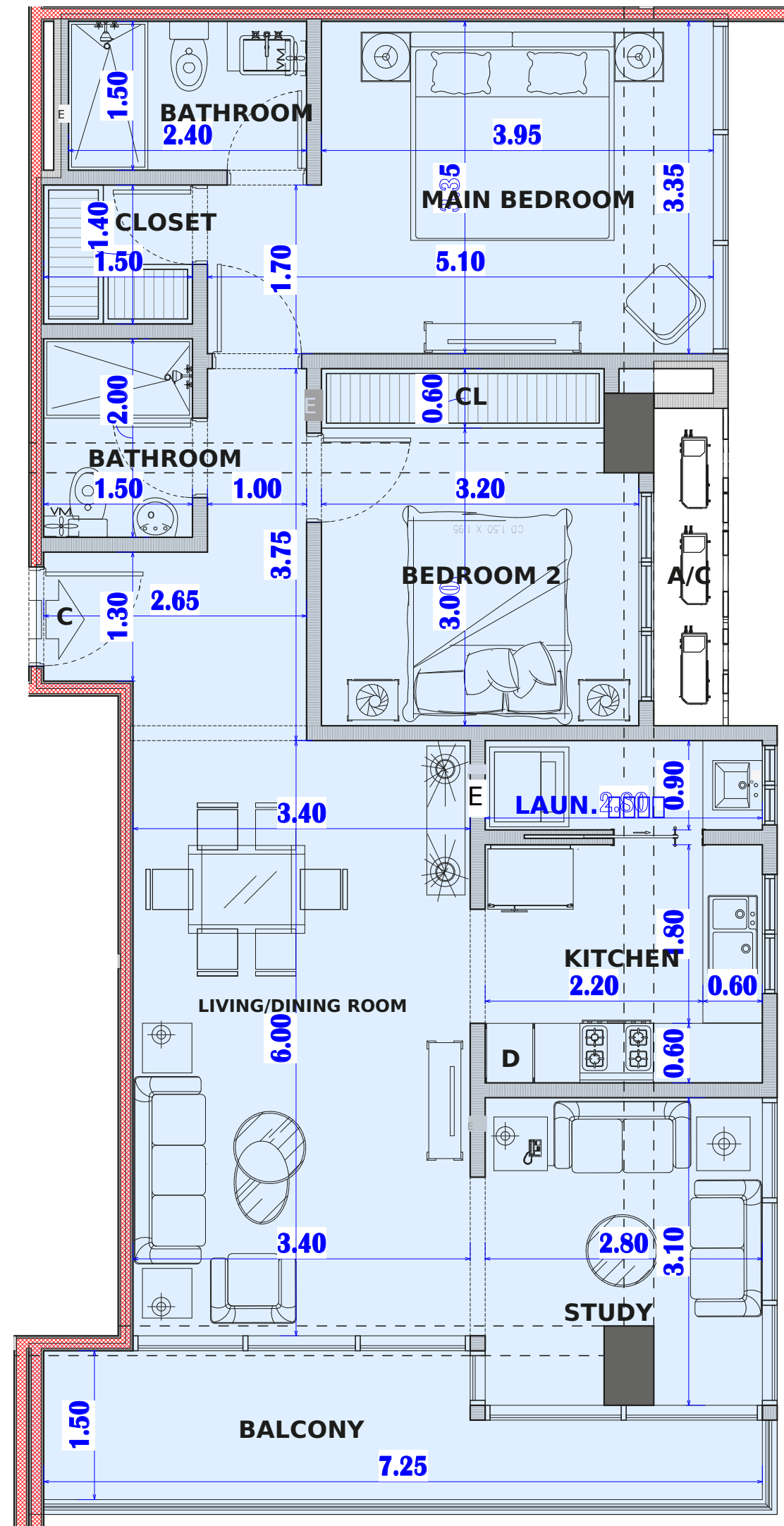


APT B
60.00 M²

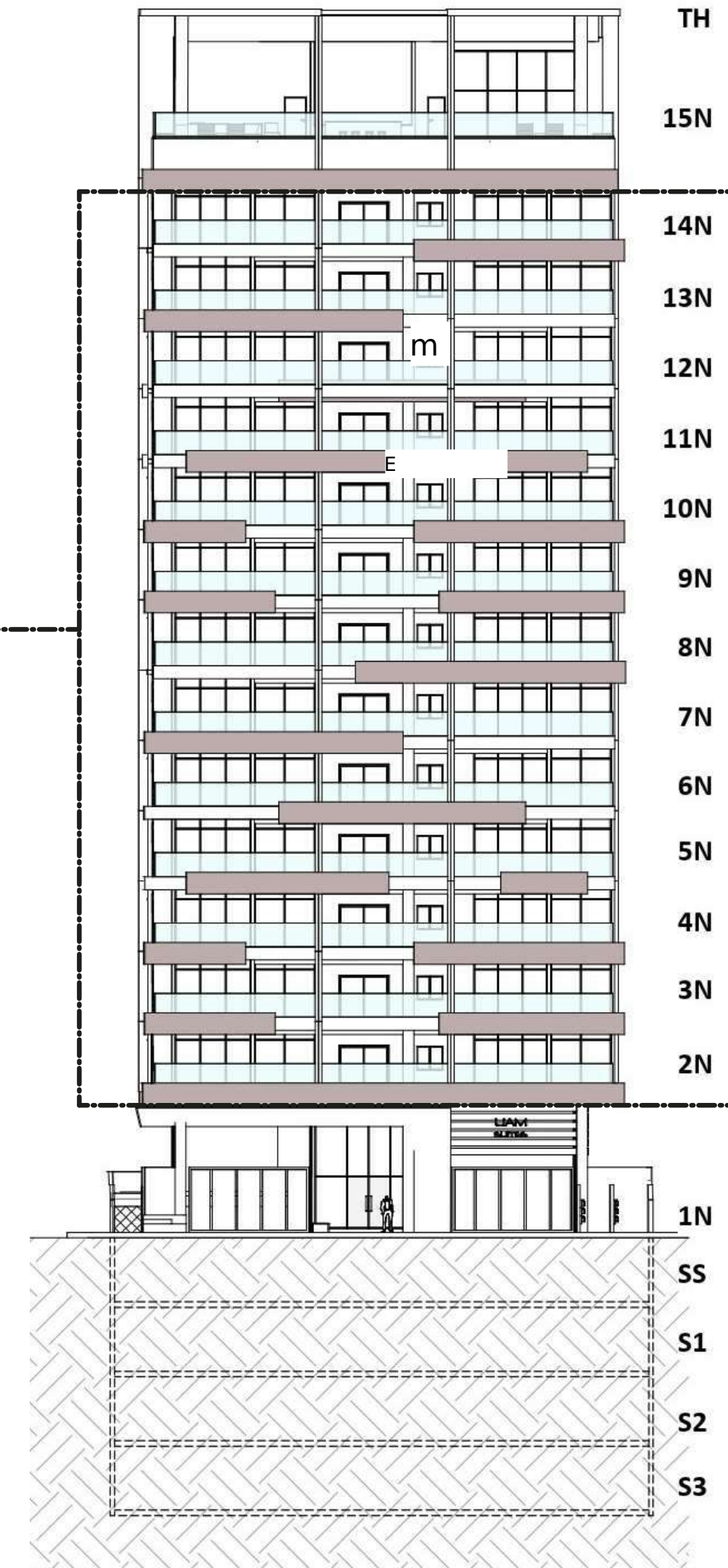


IMPORTANT: 1. All Issued Dimensions are from wall to wall, not to their axes, and the finishes of the same may result in slight tolerance to the final measurements, which are expressed in meters. 2. The supplied Area is the result of the shaded boundary with its corresponding color and does not include air conditioning pockets, full walls, and partition walls between apartments. 3. Structural Elements are indicated with Dark Shading (Wall/Columns) and Beam Projections in dashed lines.

APT B - 60.00 Mre



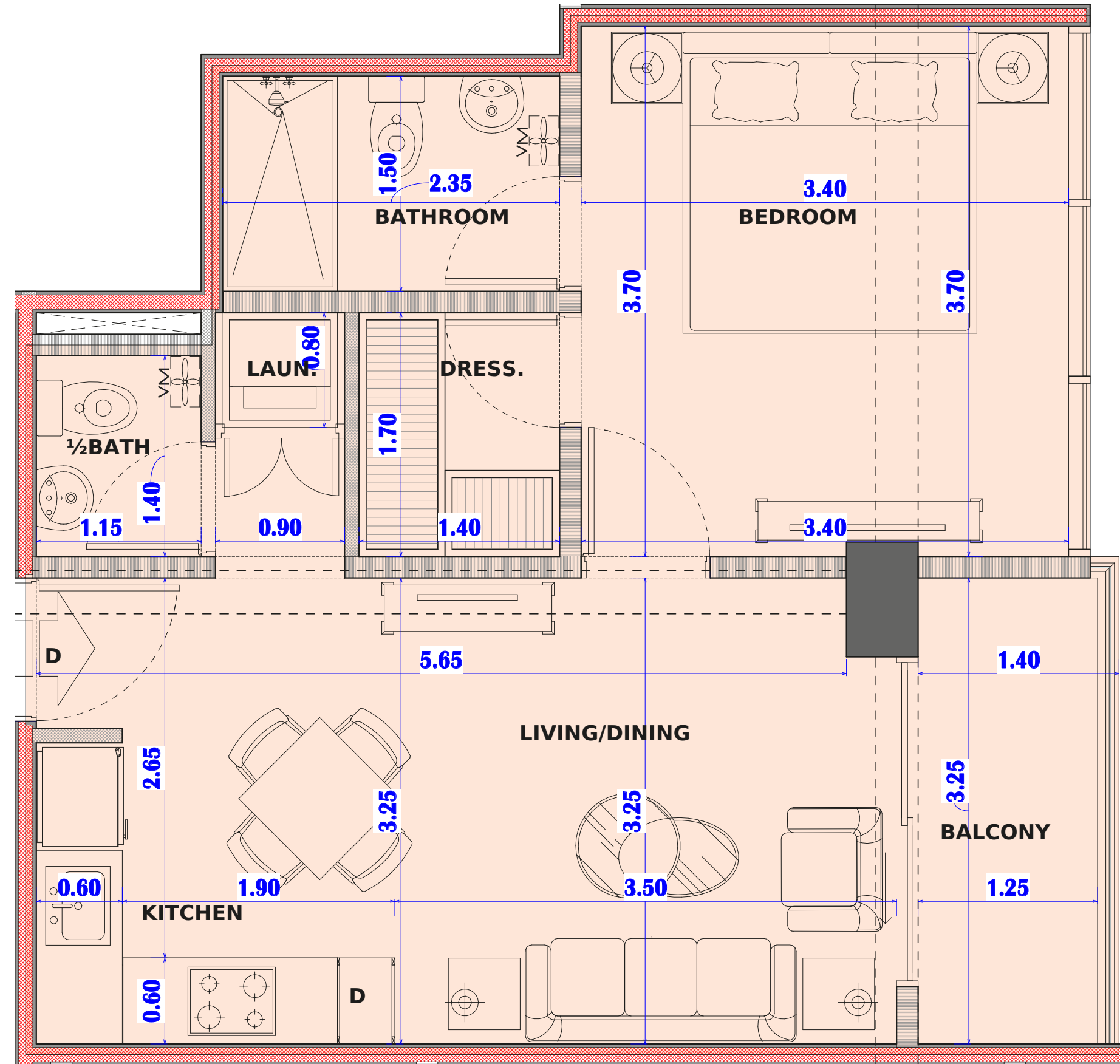
APT C
100.00 Me



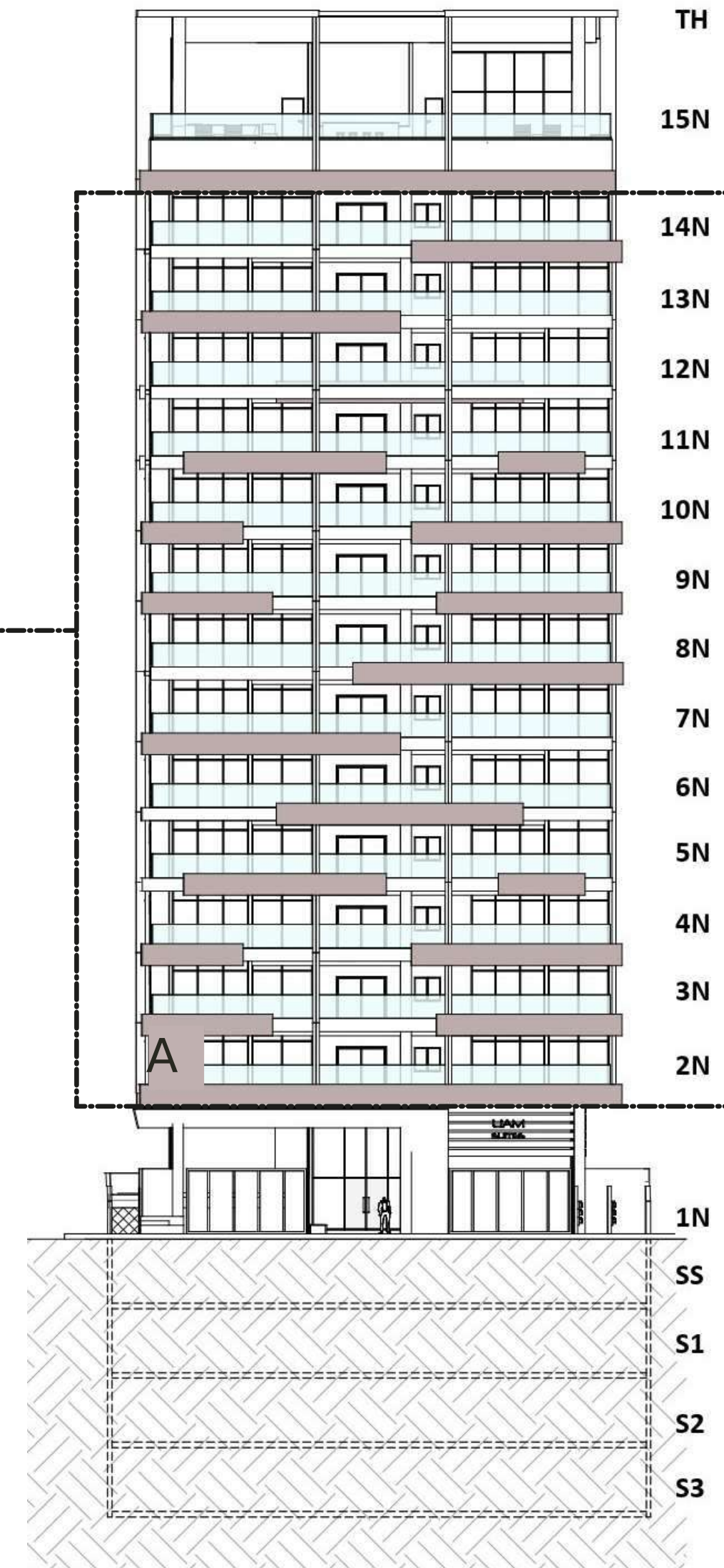
IMPORTANT: 1. All dimensions given are from wall to wall, not to their axes, and the finishes of these may result in slight tolerance in the final measurements, which are expressed in meters. 2. The area provided is the result of the shaded boundary with its corresponding color and does not include air conditioning pockets, full walls, or partition walls between apartments. 3. Structural elements are indicated with dark shading (walls/columns) and beam projections with dashed lines.

APT C

-100.00 Mt²

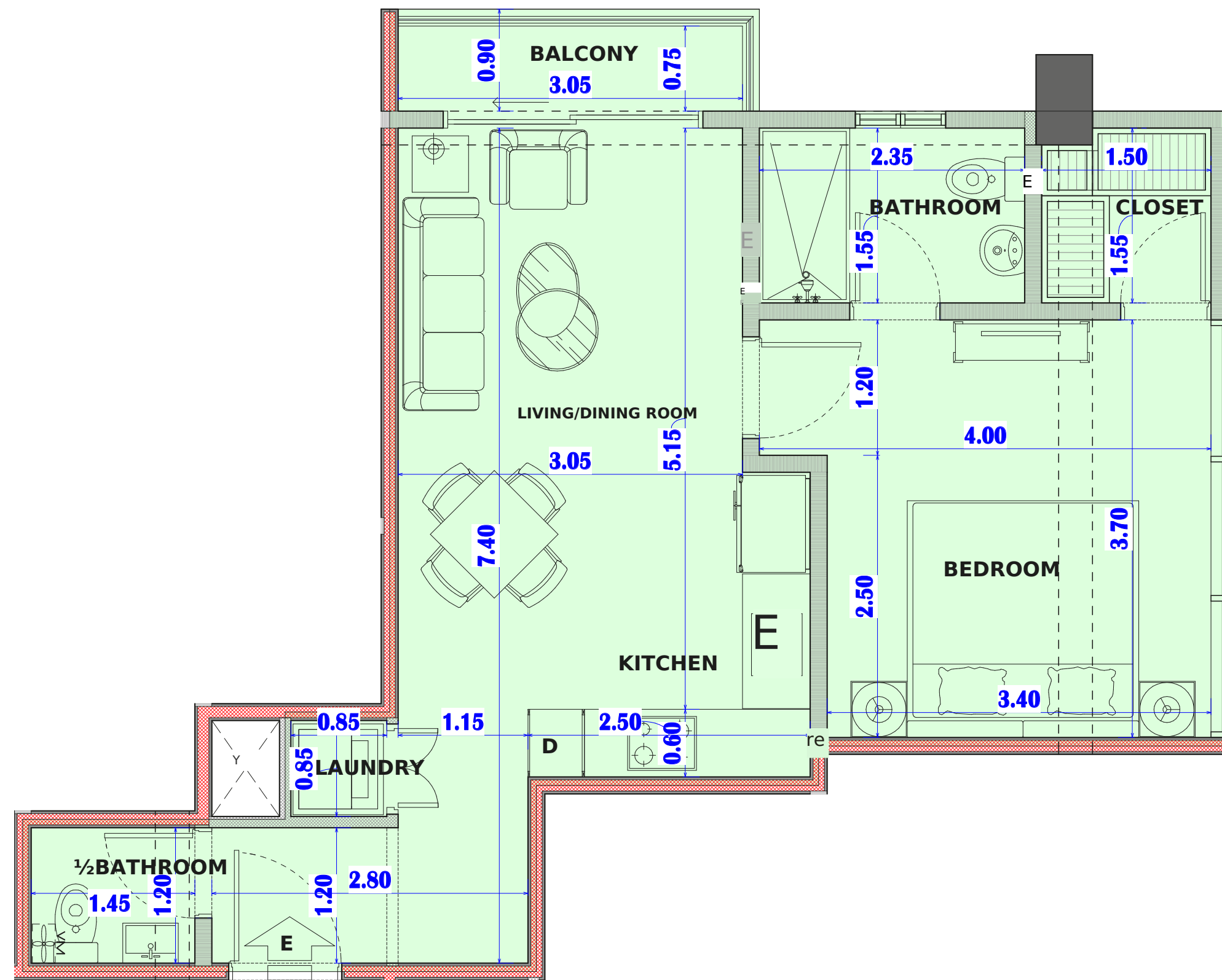


APT D
50.00 Sqm?

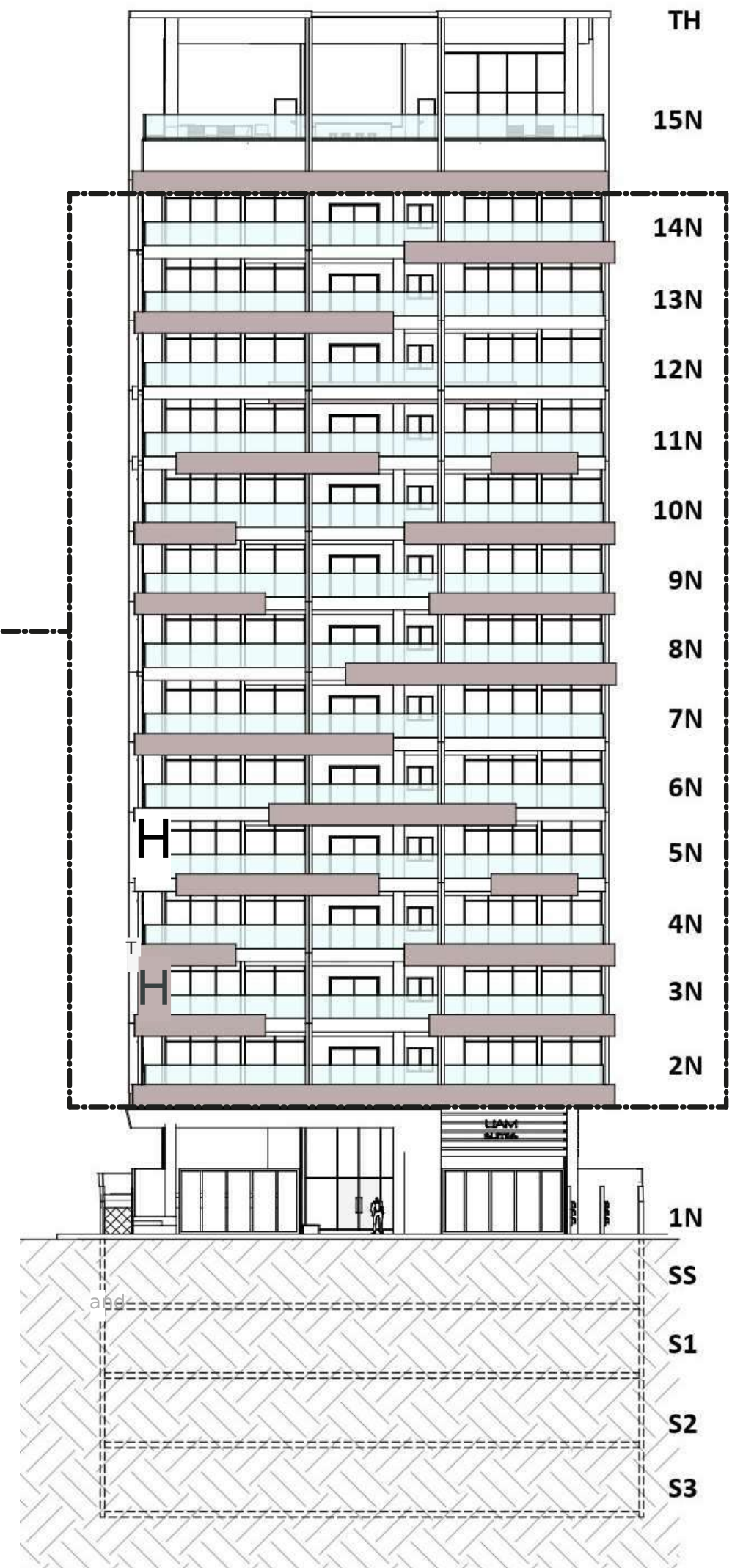


IMPORTANT: 1. All Issued Dimensions are from wall to wall, not to their axes, and their finishes may result in slight tolerance in the final measurements, which are expressed in meters. 2. The supplied Area is the result of the shaded boundary with its corresponding color and does not include air conditioning pockets, full walls, or partition walls between apartments. 3. The Structural Elements are indicated with Dark Shading (Wall/Columns) and Beam Projections in dashed lines.

APTO D - 50.00 Mre

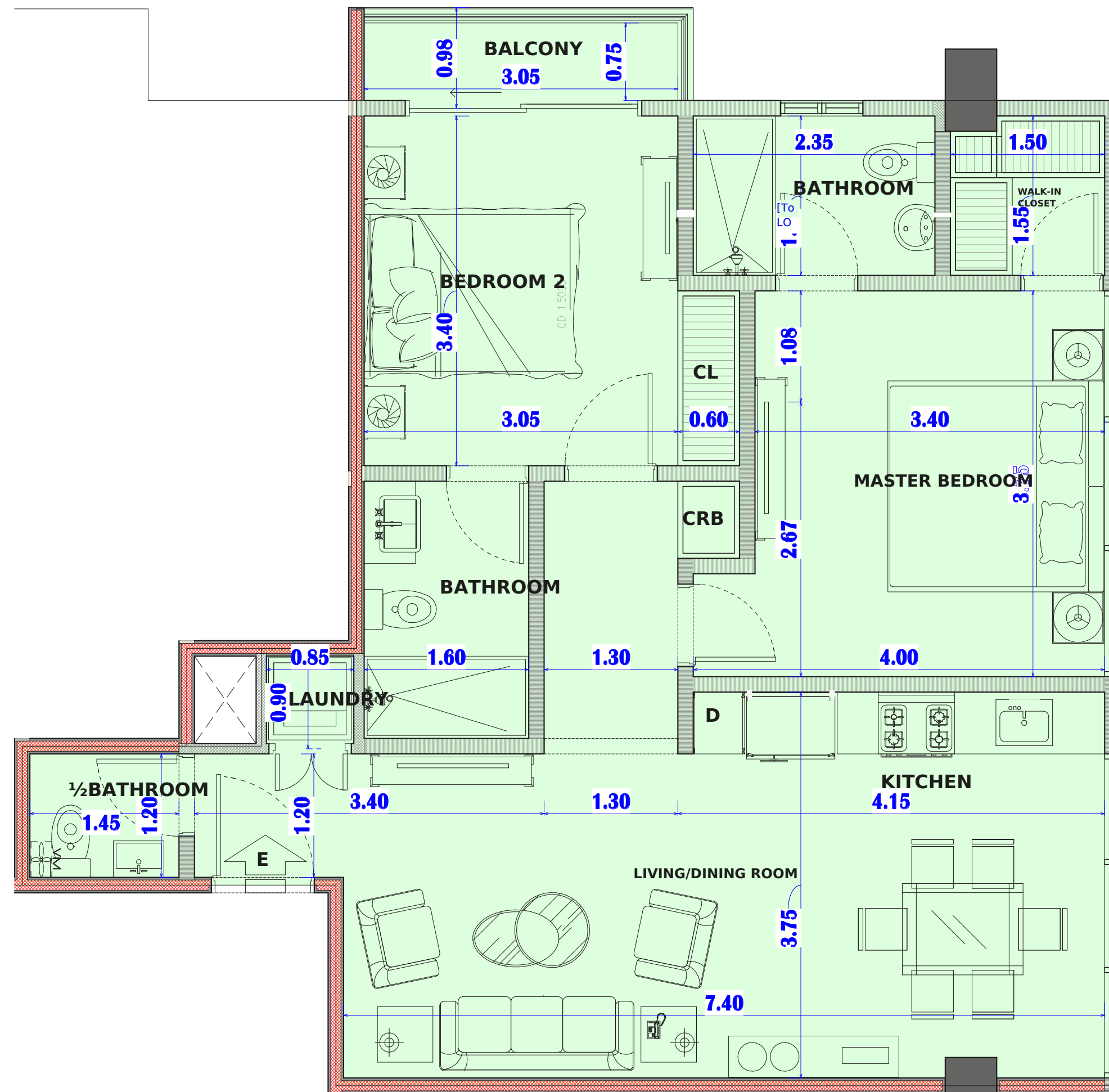


APTE
53.40 M²

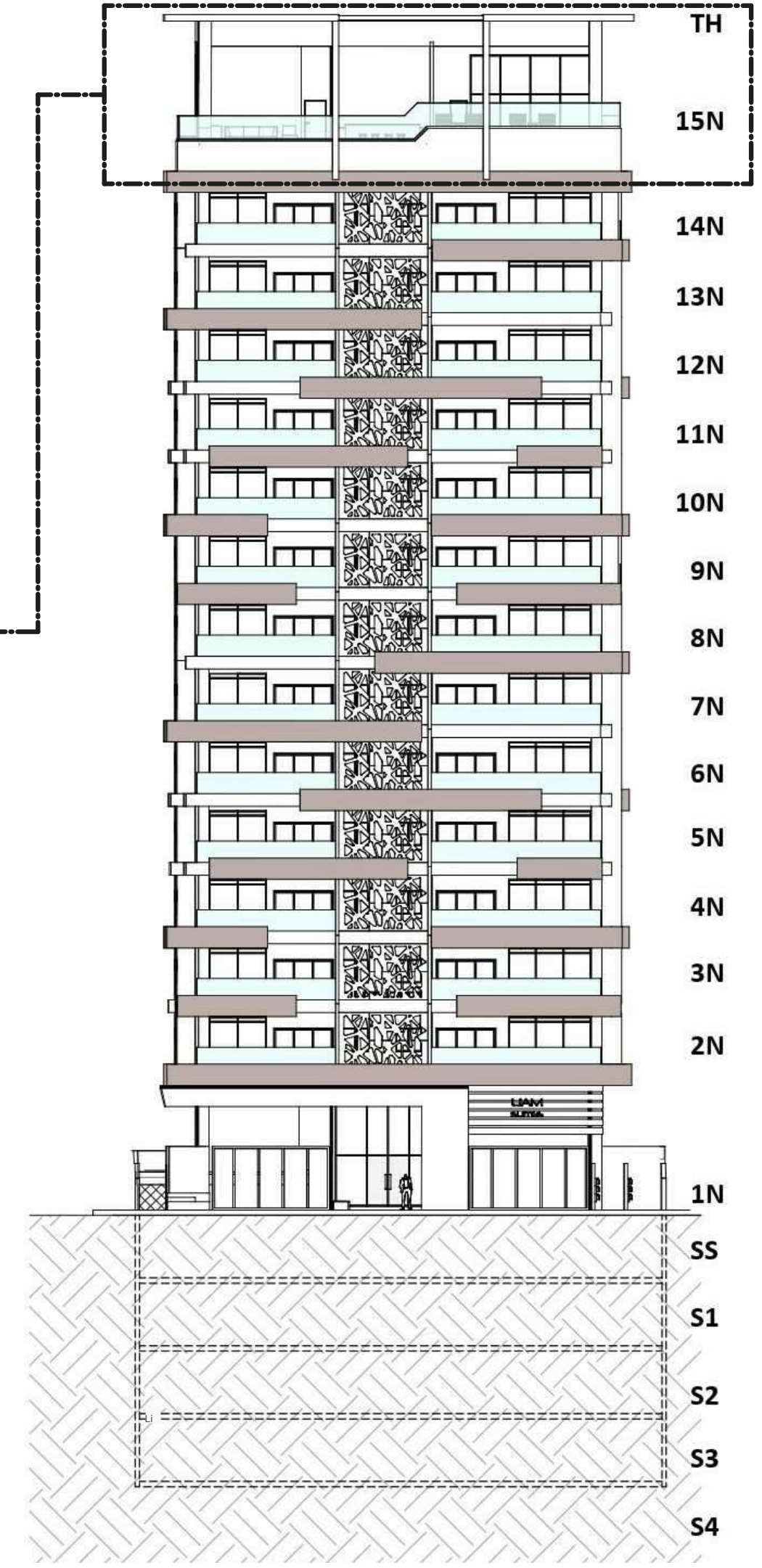


IMPORTANT: 1. All Issued Dimensions are from wall to wall, not to their axes, and the finishes of these may result in slight tolerance in the final measurements, which are expressed in meters. 2. The supplied Area is the result of the shaded boundary with its corresponding color and does not include air conditioning pockets, full walls, or partition walls between apartments. 3. The Structural Elements are indicated with Dark Shading (Wall/Columns) and Beam Projections in dashed lines.

APTO E - 53.40 M²

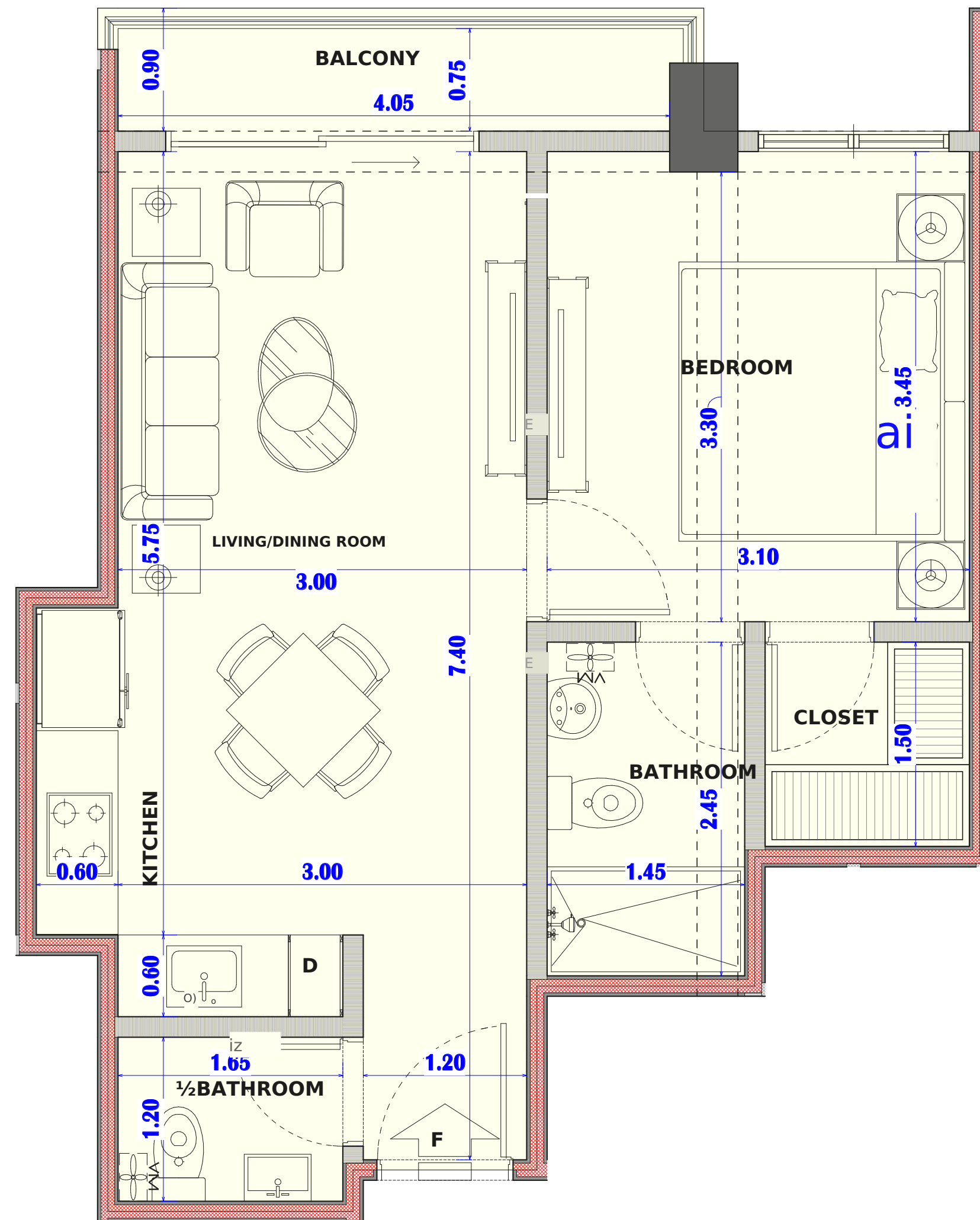


APT E
80.00 Mt?

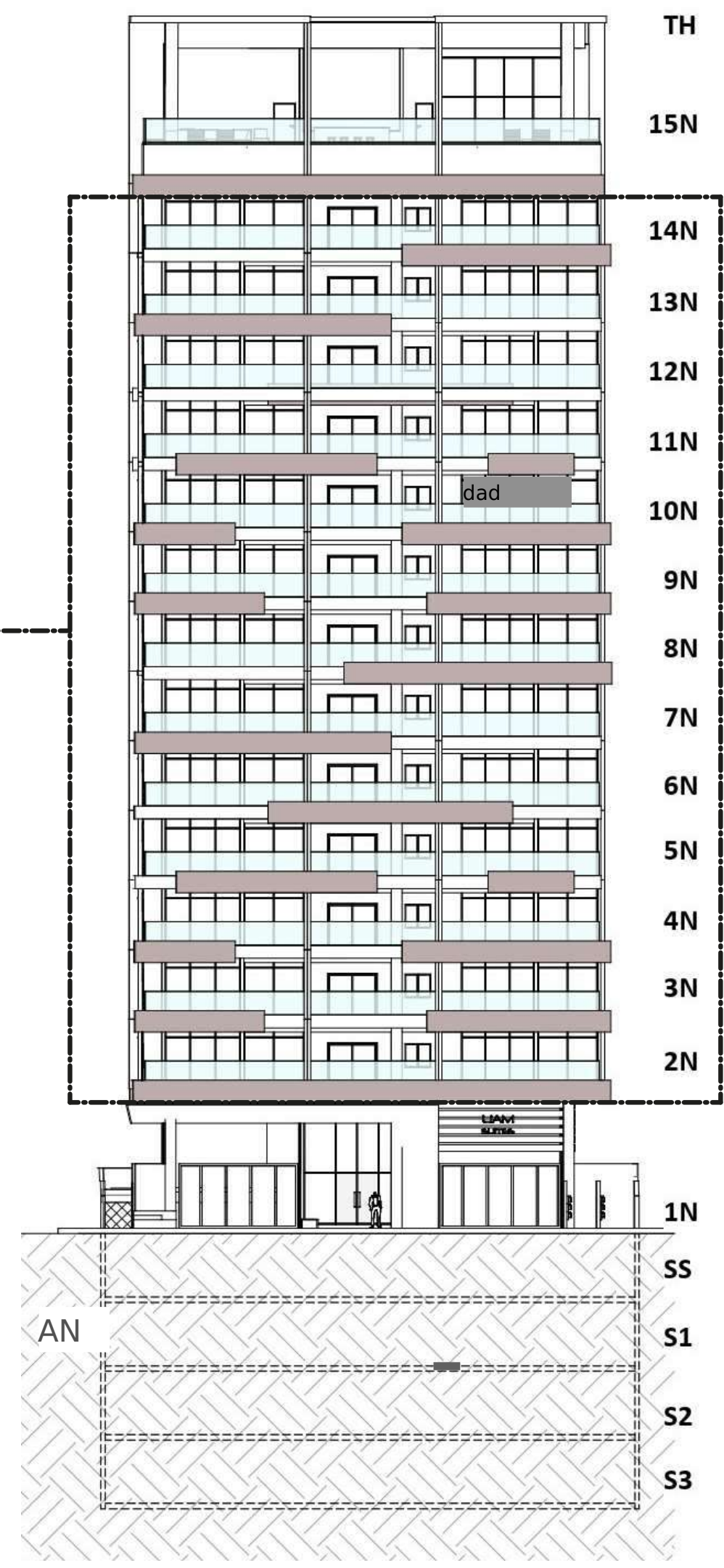


IMPORTANT: 1. All Issued Dimensions are from wall to wall, not to their axes, and the finishes of these may result in slight tolerance in the final measurements, which are expressed in meters. 2. The supplied Area is the result of the shaded boundary with its corresponding color and does not include air conditioning pockets, full walls, or partition walls between apartments. 3. Structural Elements are indicated with Dark Shading (Wall/Columns) and Beam Projections in dashed lines.

APT E - 80.00 Mt²

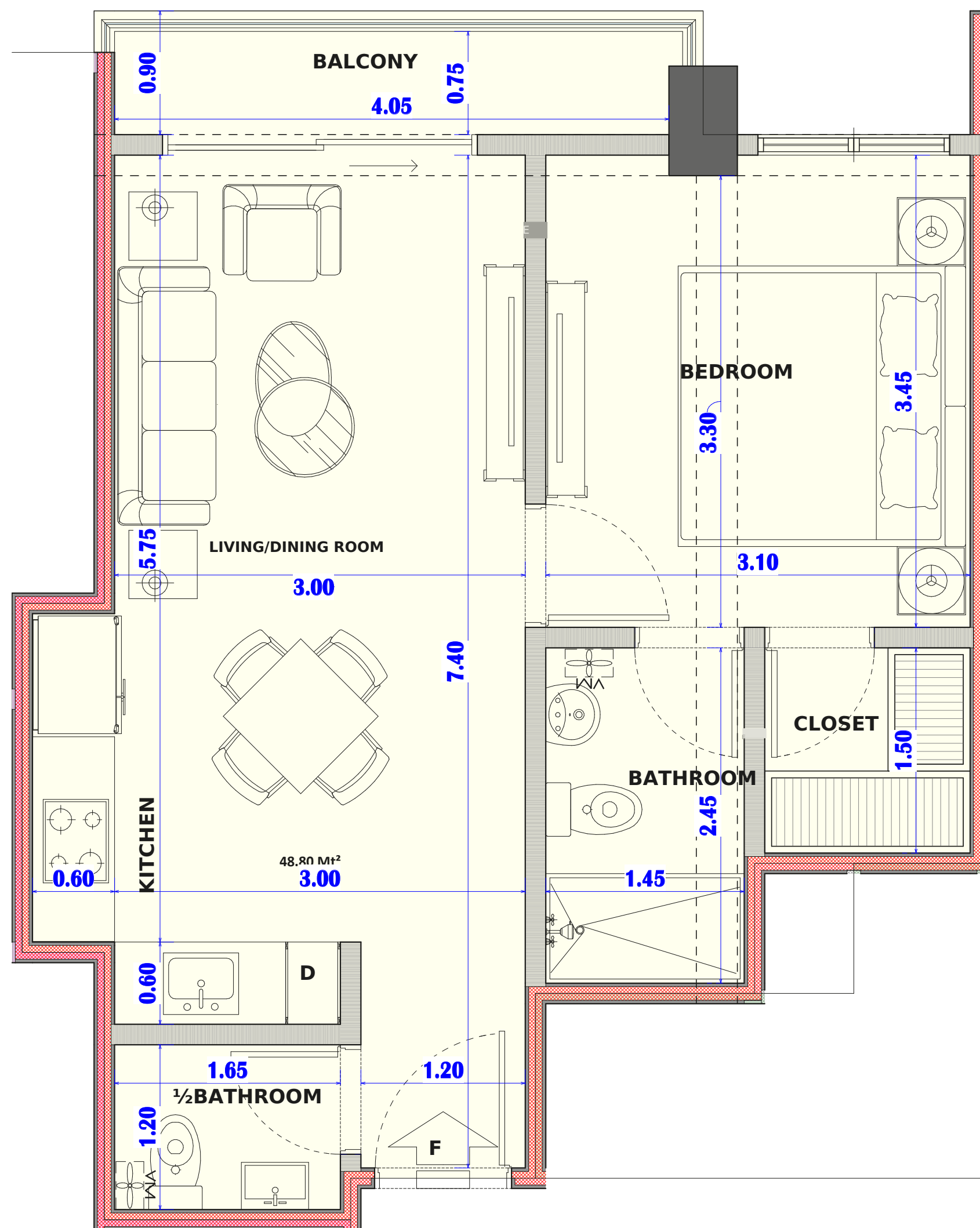


APT F
48.80 M²

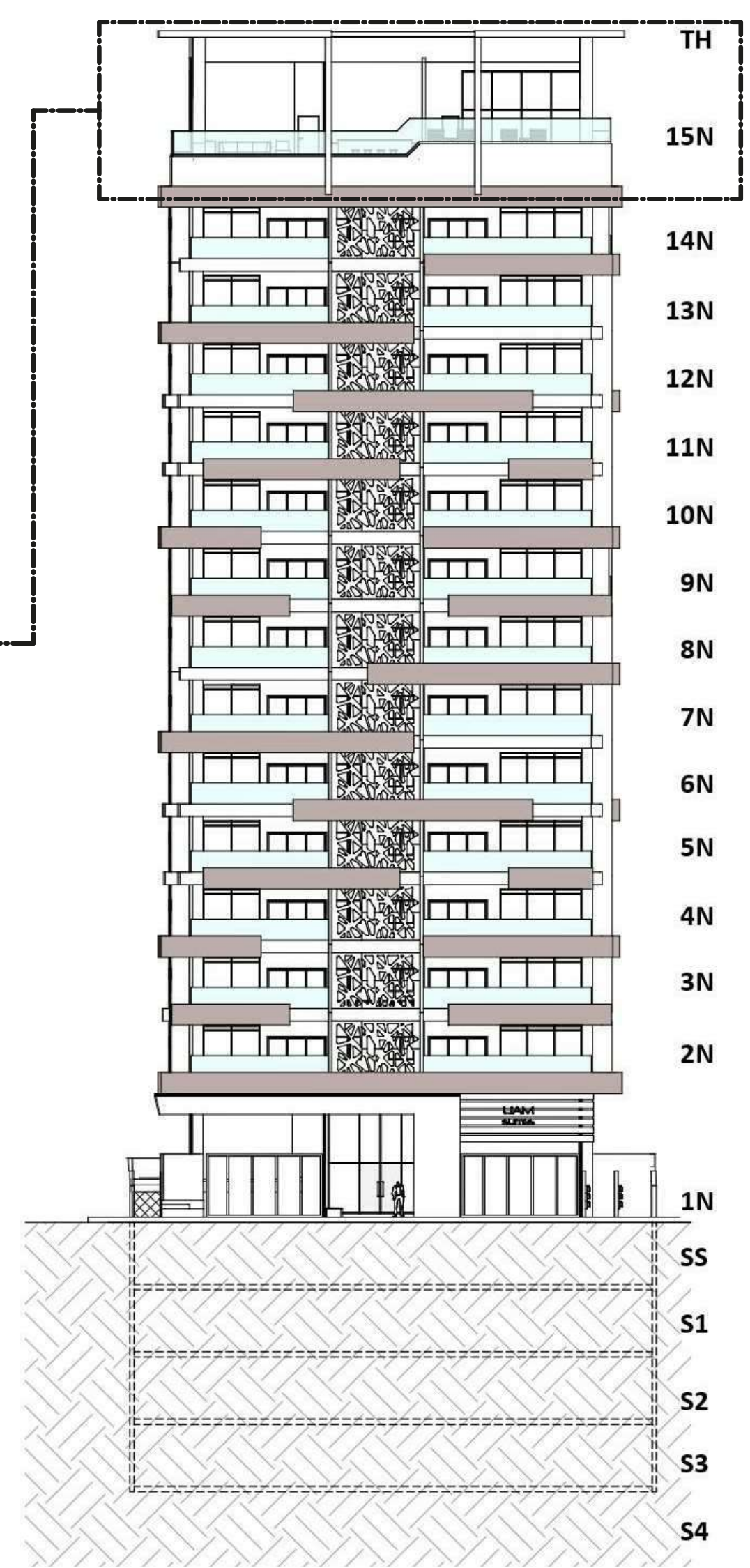


IMPORTANT: 1. All Issued Dimensions are from wall to wall, not to their axes, and the finishes of these may result in slight tolerance in the final measurements, which are expressed in meters. 2. The supplied Area is the result of the shaded boundary with its corresponding color and does not include air conditioning pockets, full walls, or partition walls between apartments. 3. The Structural Elements are indicated with Dark Shading (Wall/Columns) and Beam Projections in dashed lines.

APT F - 48.80 Mre

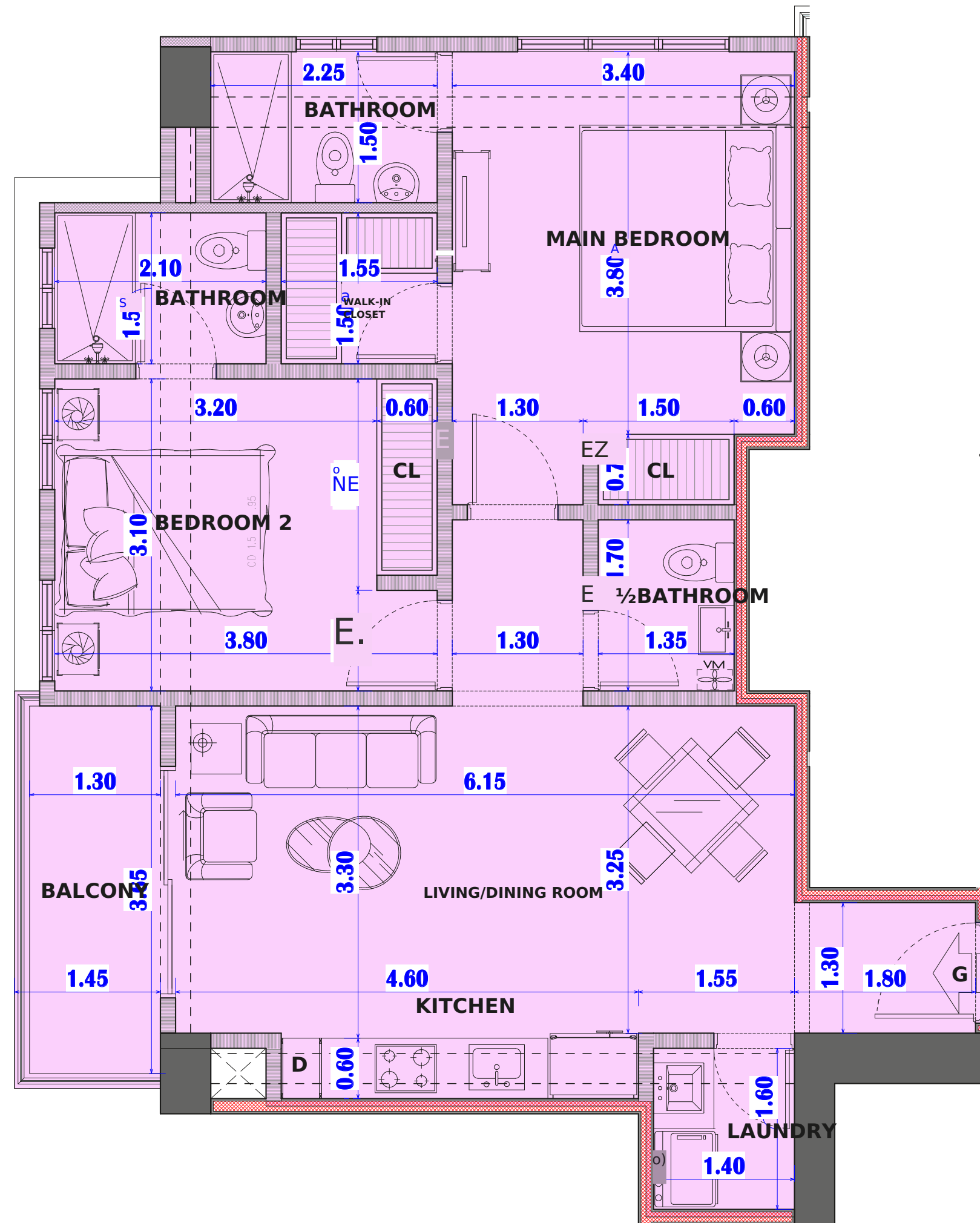


APT F
48.80 Sqm?

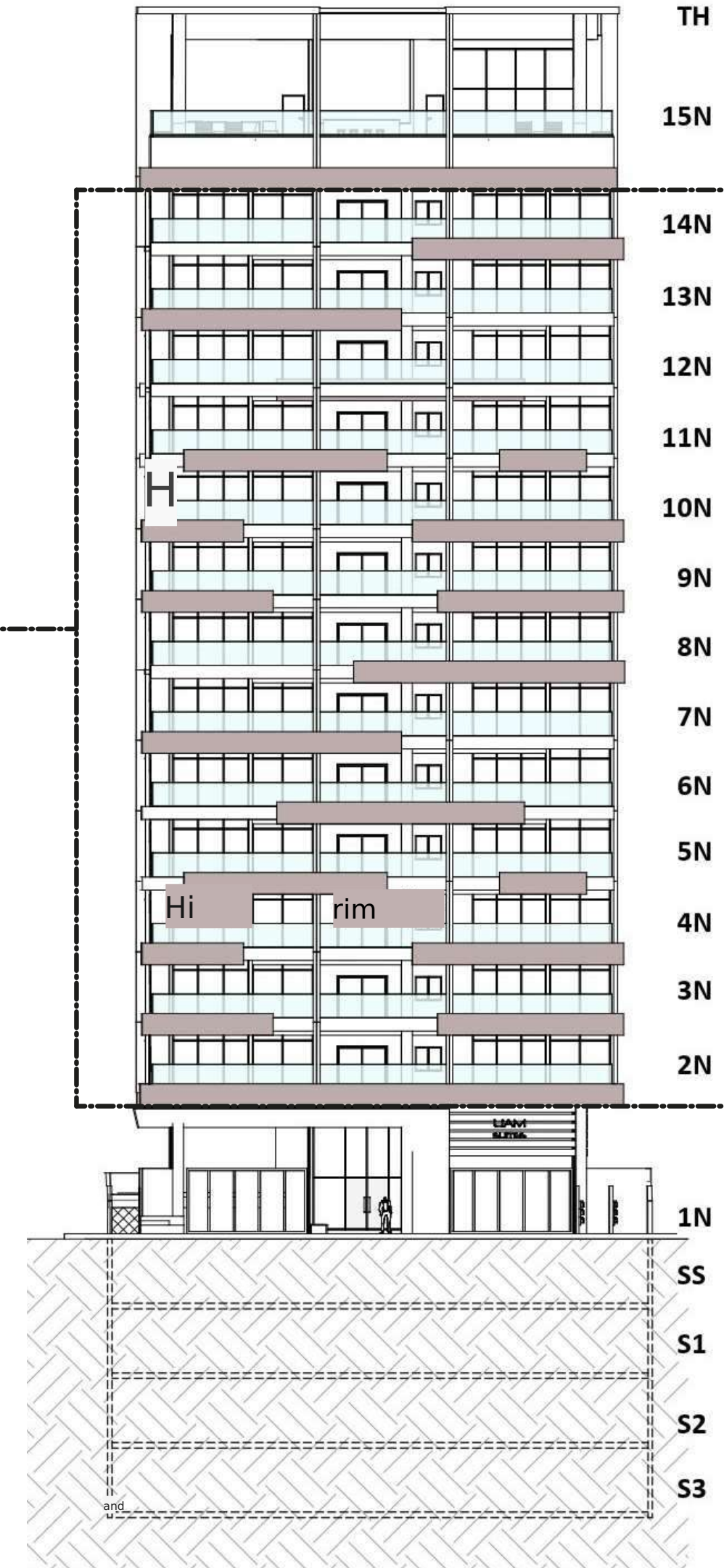


IMPORTANT: 1. All Issued Dimensions are from wall to wall, not to their axes, and the finishes of these may result in slight tolerance in the final measurements, which are expressed in meters. 2. The supplied Area is the result of the shaded boundary with its corresponding color and does not include air conditioning pockets, full walls, or partition walls between apartments. 3. The Structural Elements are indicated with Dark Shading (Wall/Columns) and Beam Projections with a Dotted Line.

APTO F - 48.80 Mte

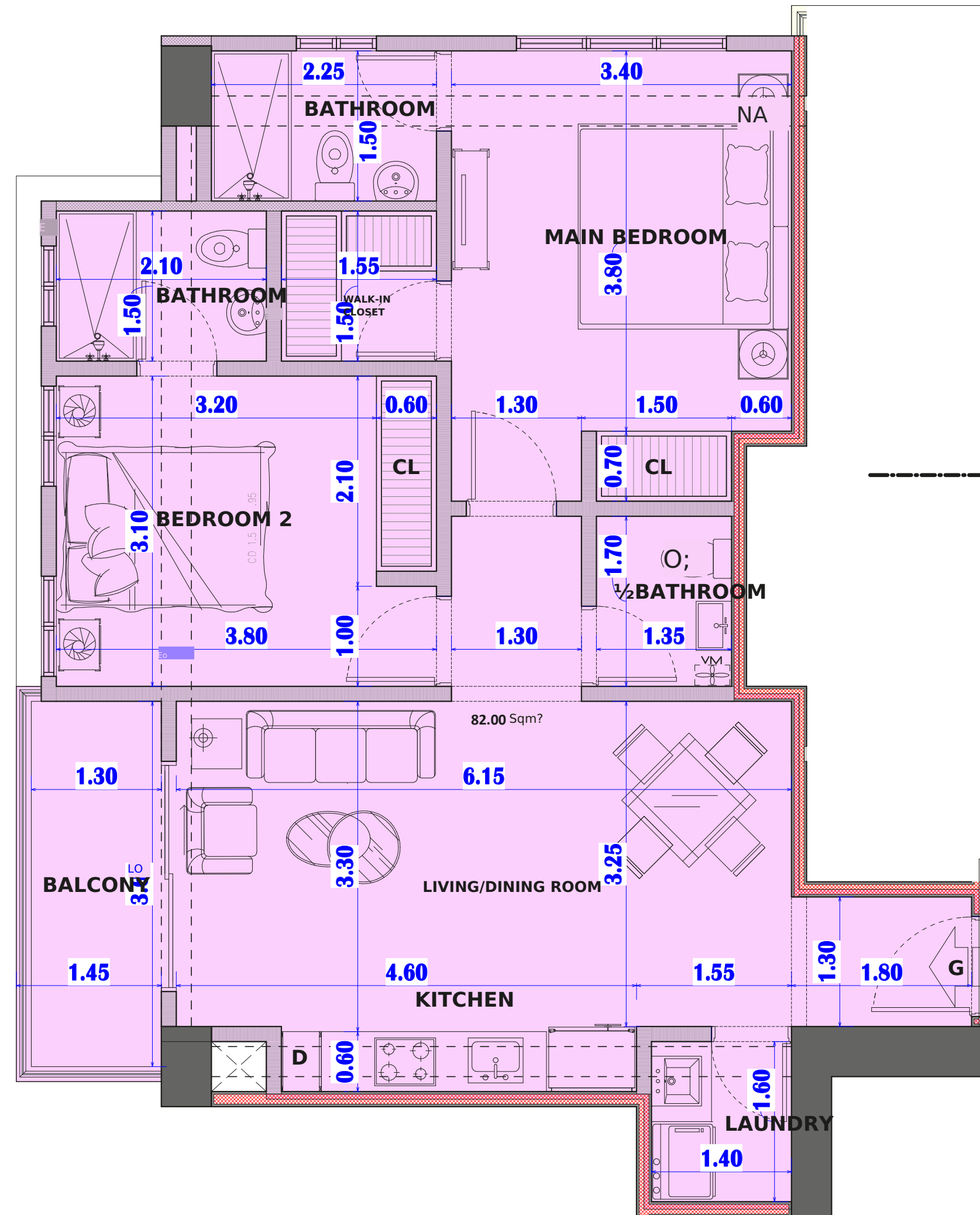


APT G
82.00 Mt?

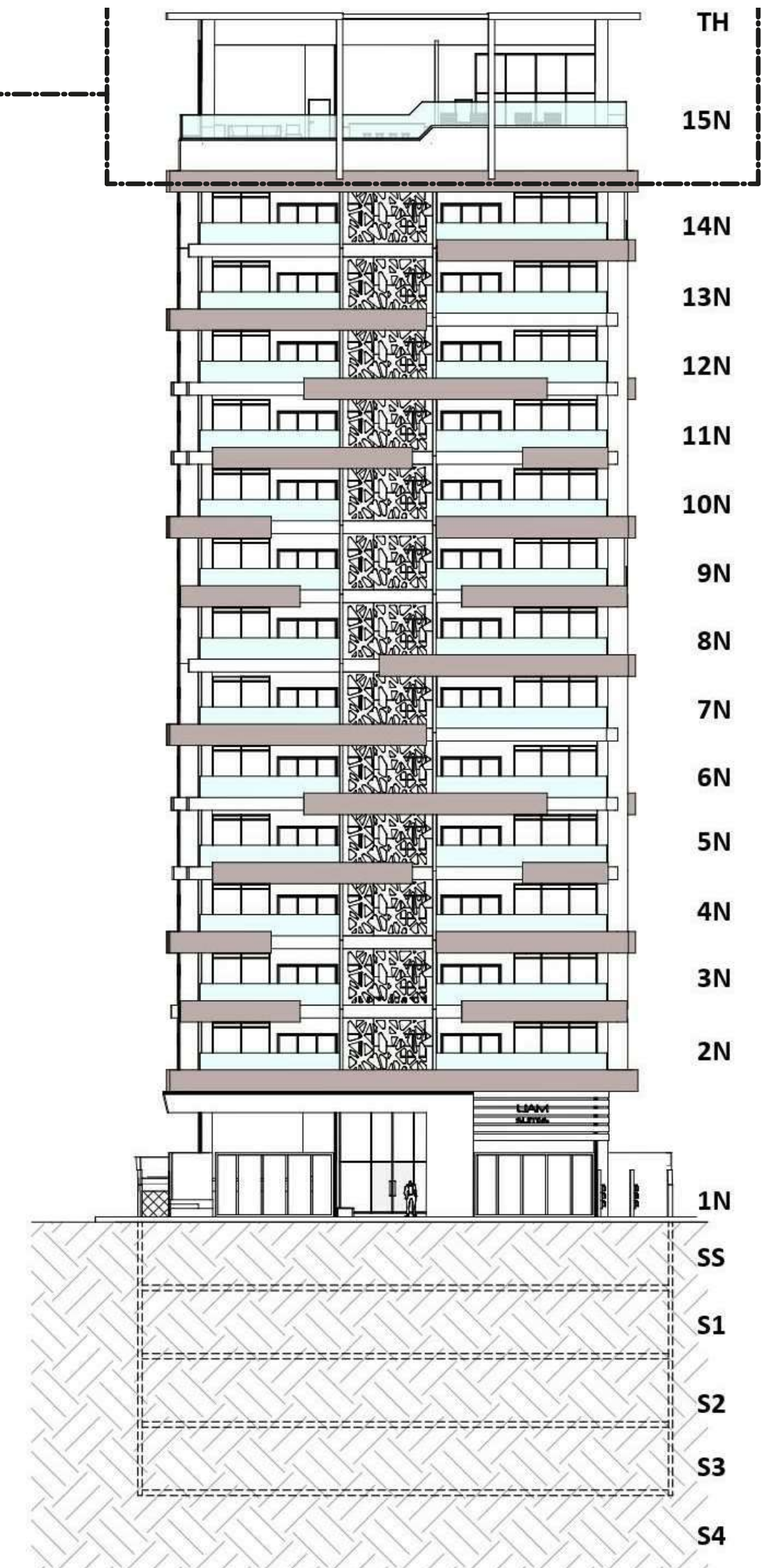


IMPORTANT: 1. All Issued Dimensions are from wall to wall, not to their axes, and the finishes of these may result in slight tolerance in the final measurements, which are expressed in meters. 2. The supplied Area is the result of the shaded boundary with its corresponding color and does not include air conditioning pockets, full walls, or partition walls between apartments. 3. The Structural Elements are indicated with Dark Shading (Wall/Columns) and Beam Projections with a Dotted Line.

APT G - 82.00 Mt²

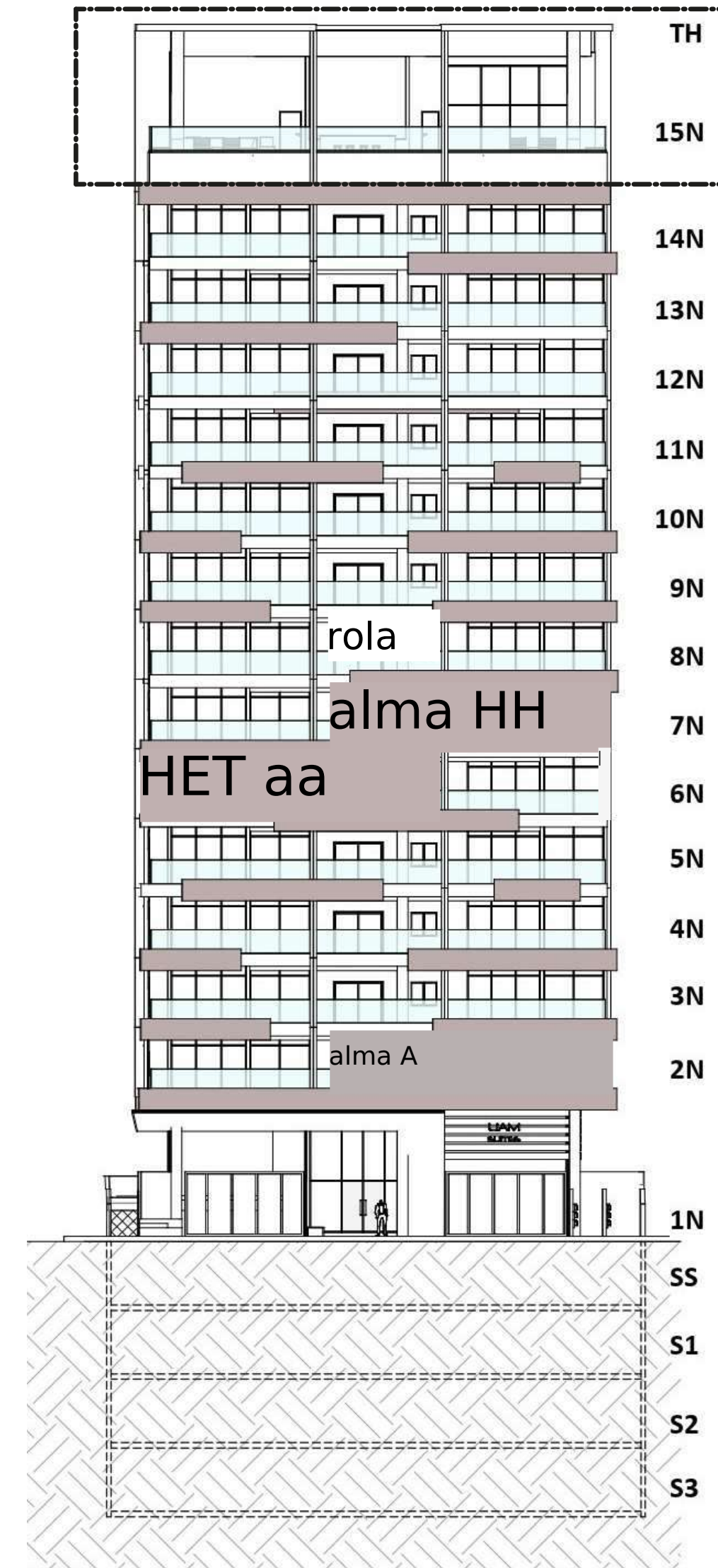
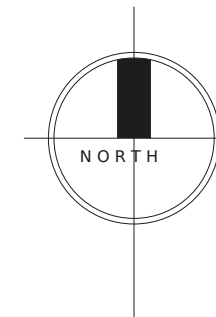
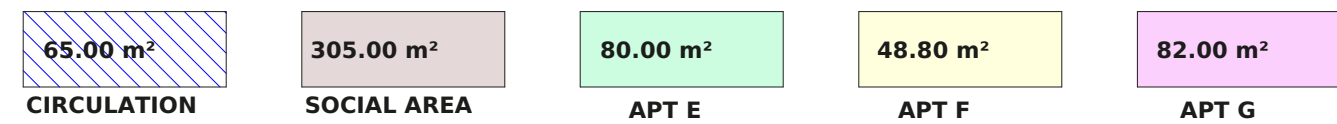
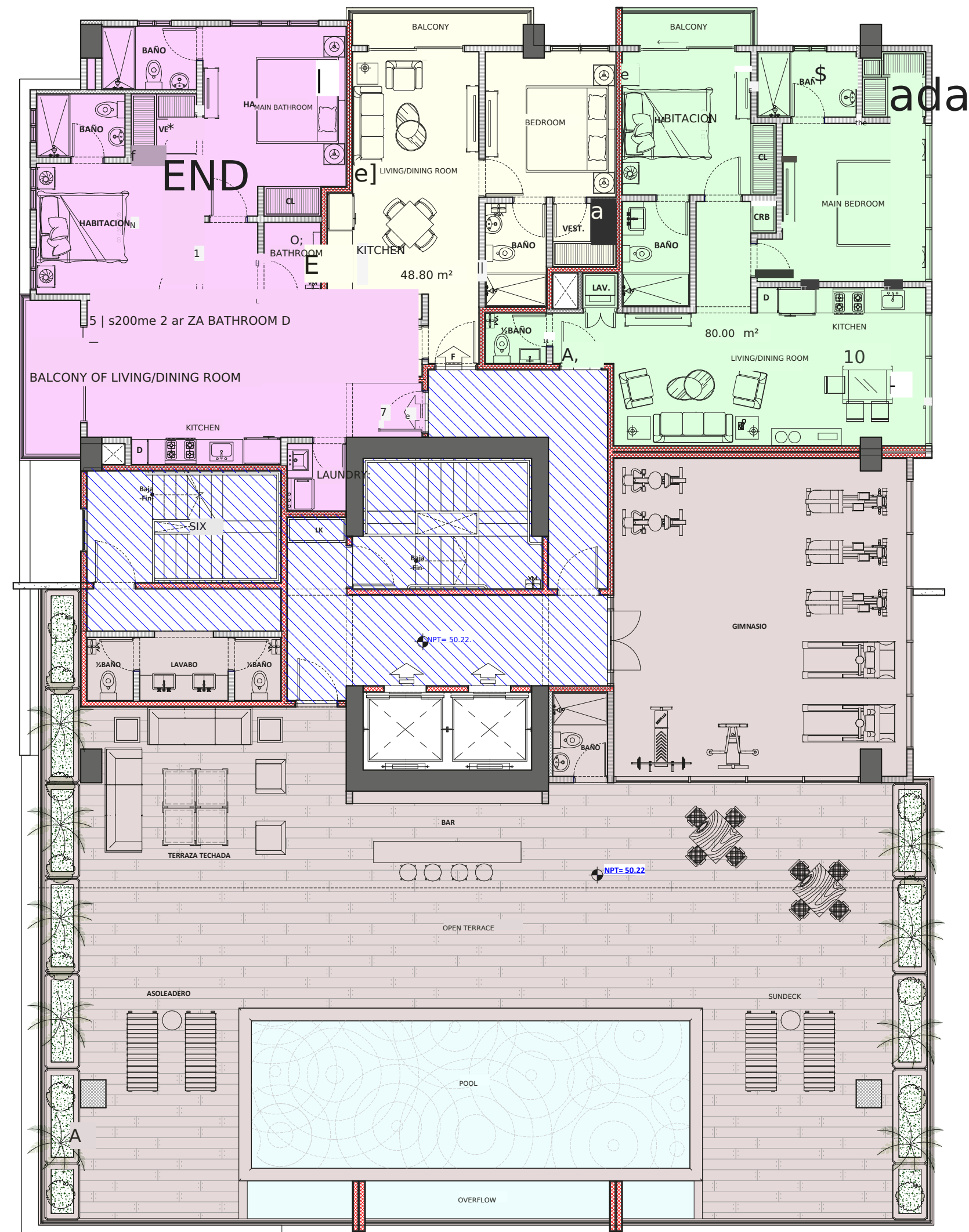


APT F
82.00 Sqm?



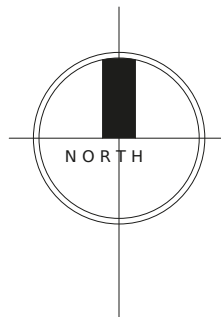
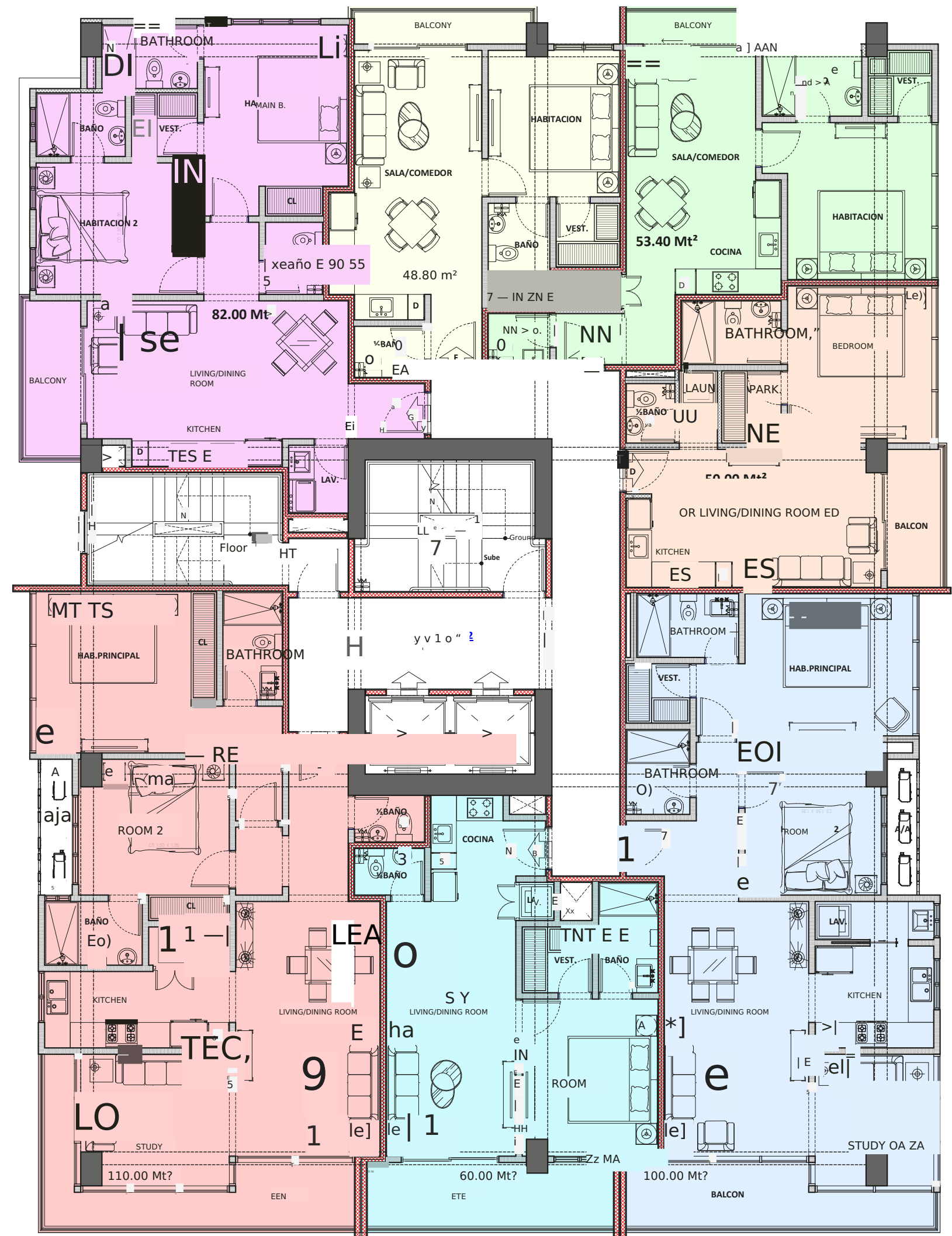
IMPORTANT: 1. All Issued Dimensions are from wall to wall, not to their axes, and the finishes of these may result in slight tolerance in the final measurements, which are expressed in meters. 2. The supplied Area is the result of the shaded boundary with its corresponding color and does not include air conditioning pockets, full walls, or partition walls between apartments. 3. The Structural Elements are indicated with Dark Shading (Wall/Columns) and Beam Projections in dashed lines.

APTO C - 82.00 Mt²

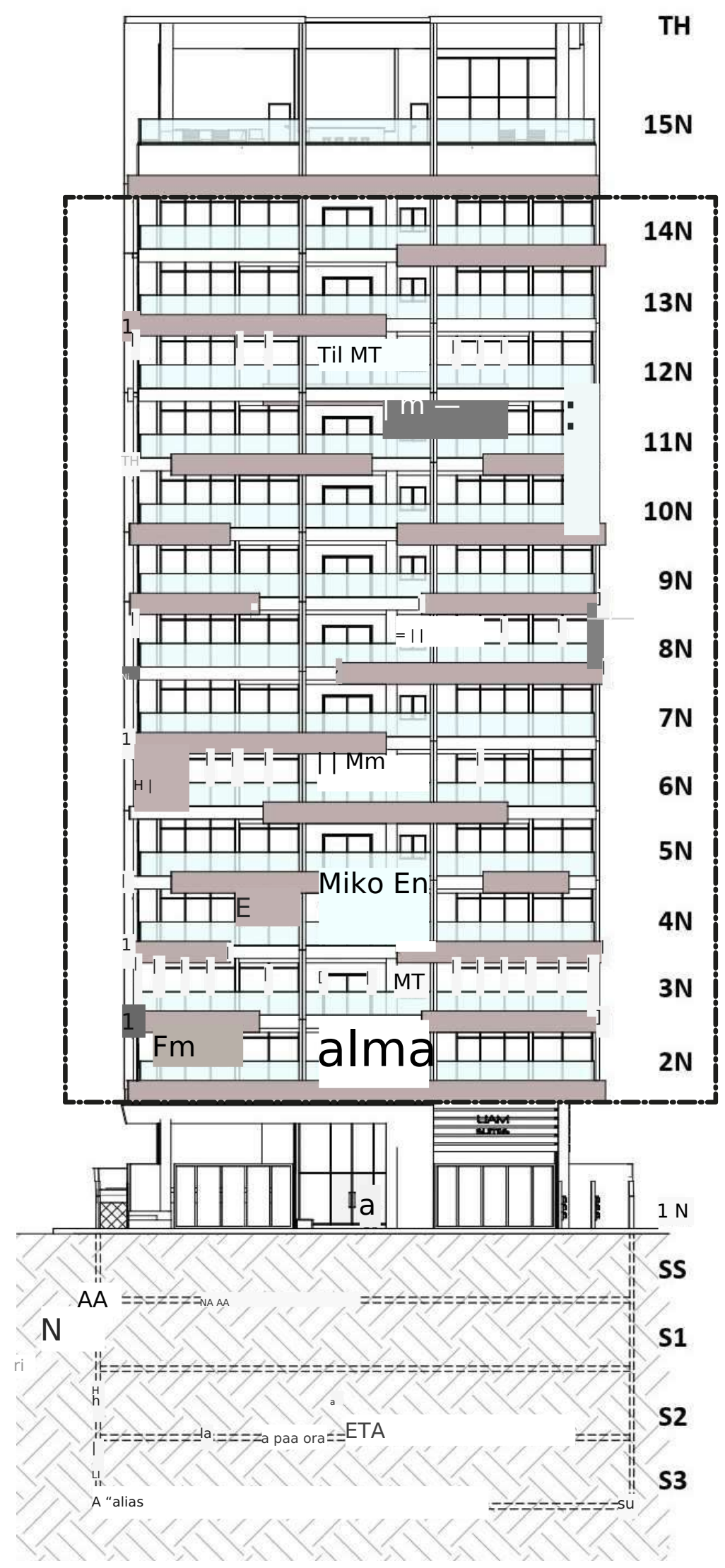


IMPORTANT: 1. All Issued Dimensions are from wall to wall, not to their axes, and their finishes may result in slight tolerance in the final measurements, which are expressed in meters. 2. The supplied Area is the result of the shaded boundary with its corresponding color and does not include air conditioning pockets, full walls, or partition walls between apartments. 3. Structural Elements are indicated with Dark Shading (Wall/Columns) and Beam Projections in dotted lines.

TYPICAL FLOOR PLAN LEVEL 15 (A.S)



110.00 MT ²	60.00 MT ²	100.00 MT ²	50.00 MT ²	53.40 MT ²	48.80 MT ²	82.00 MT ²
APT A	APT B	APT C	APT D	APT E	APT F	APT G



IMPORTANT: 1. All Issued Dimensions are from wall to wall, not to their axes, and the finishes of these may result in slight tolerance to the final measurements, which are expressed in meters. 2. The supplied Area is the result of the shaded boundary with its corresponding color and does not include air conditioning pockets, full walls, and partition walls between apartments. 3. The Structural Elements are indicated with Dark Shading (Wall/Columns) and the Beam Projections with a Dotted Line.

TYPICAL FLOOR 2 TO 7





PAYMENT PLAN

US\$ 5,000
RESERVATION

10%

DOWN PAYMENT

40%

DURING CONSTRUCTION

50%

UPON DELIVERY

DELIVERY

DECEMBER 2026

"PENALTIES APPLY"

- NON-REFUNDABLE RESERVATION.

- TRANSFER COSTS ARE THE CLIENT'S RESPONSIBILITY, THE RECEIPT WILL
BE ISSUED FOR THE AMOUNT REFLECTED IN THE DEVELOPER'S ACCOUNTS.





PUNTA CANA

Plaza Cormont II, Boulevard Turístico
Del Este, Punta Cana,
Units 5,6,7.
Pyhex Work

Tel: 829-420-5203 IG:
urbangroup.do
info@urbangroup.do
www.urbangroup.do

SANTO DOMINGO

C/Rafael A. Sánchez No. 46 Bldg.
Ana Judith, Suite 203-A
Ens. Naco

Tel: 809-566-3672 IG:
urbangroup.do
Info@urbangroup.do
www.urbangroup.do